

*HER number*  
23

## Identification

<i>Name</i> 23	<i>Morphotype</i> D4	<i>Other designations</i>
-------------------	-------------------------	---------------------------

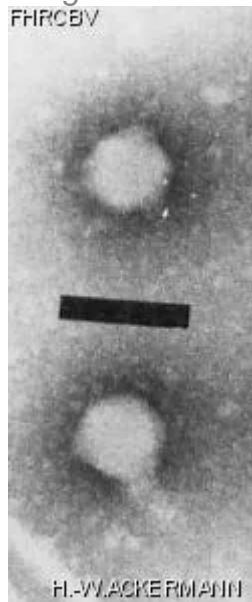
## Taxonomy

<i>Realm</i> Varidnaviria	<i>Kingdom</i> Bamfordvirae	<i>Phylum</i> <a href="#">Preplasmiviricota</a>	<i>Class</i> Tectiliviricetes
<i>Order</i> Kalamavirales	<i>Family</i> Tectiviridae	<i>Genus</i> Alphatectivirus	<i>Species</i> Alphatectivirus PRD1

## Images

*Electron Micrograph*

*Image*  
FHRCEV



*Image description*

Magnification: 92,400X  
Bar: 100 nm  
Staining: PT

*Characteristics*

Plaques: 1- 1.5mm, clear.  
Specific for broad host range plasmid RP1.  
Cubic, lipid-containing.

*Genomic sequence*

Activated

Propagation conditions	
<i>Bacterial hosts</i> 1023 1217 1221	
<i>Reference</i> Olsen, R. H., J.-S. Siak, and R. H. Gray. 1974. Characteristics of PRD1, a plasmid-dependent broad host range DNA bacteriophage. J. Virol. 14: 689-699.	
<i>Remarks</i>	
History	
<i>History</i>	
<b>Received from</b> Dr Dennis Bamford, Public Health Research Institute of the City of New York, NY, 10016, USA.	<b>Date</b> 11-23-81
<b>Received from</b> Dr L. Mindich	<b>Date</b>
<b>Isolated by</b> Dr R. H. Olsen, University of Michigan, Medical School, Departement of microbiology, Ann Arbor, MI, 48104, USA.	<b>Date</b>
<i>Source</i> Sewage, Kalamazoo, MI, USA	
<i>Updated at</i> 2024-01-15	