

*HER number*  
119

## Identification

*Name*  
N4 Lesley

*Morphotype*  
B1 (Siphophage)

*Order*

*Family*  
?1

*Genus*

*Species*

*Other designations*  
N4

## Taxonomy

*Class*

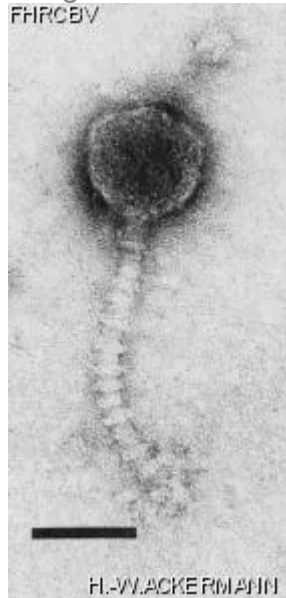
*Realm*

*Kingdom*

## Images

*Electron Micrograph*

*Image*



*Image description*

Magnification: 297,000X

Bar: 50 nm

Staining: UA

*Characteristics*

Plaques: 0.1- 0.5mm, veiled.

Typing phage.

Lesley: YSM double agar layer, 48h.

*Genomic sequence*

Deactivated

## Propagation conditions

*Bacterial hosts*

[1119](#)

*Reference*

Can. J. Microbiol. 1982. 28:180-189.

*Remarks*

## History

*History*

**Isolated by**

S. M. Lesley and I. Sinha, CRBI.

**Date**

05-1979

**Received from**

S. M. Lesley,  
Chemistry and Biology Research Institute,  
Research Branch,  
Agriculture Canada,  
Ottawa, ON. Canada,  
K1A 0C6.

**Date**

21-06-1982

*Updated at*

2024-01-16