

HER number
124

Identification

<i>Name</i> 124	<i>Morphotype</i> B1 (Siphophage)	<i>Other designations</i> M4
--------------------	--------------------------------------	---------------------------------

Taxonomy

<i>Realm</i>	<i>Kingdom</i>	<i>Phylum</i>	<i>Class</i>
<i>Order</i>	<i>Family</i> ?1	<i>Genus</i>	<i>Species</i>

Images

Electron Micrograph

Image

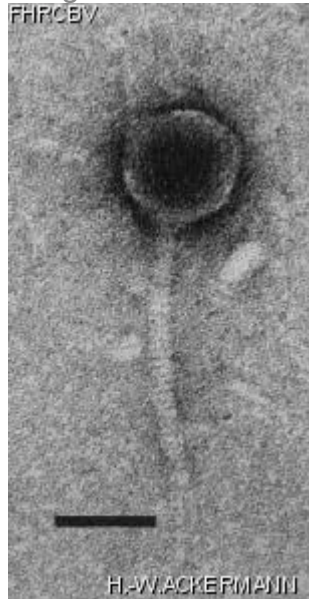


Image description

Magnification: 297,000X

Bar: 50 nm

Staining: UA

Characteristics

Plaques: 0.1mm, veiled.

Typing phage.

Lesley: YSM double agar layer, 48h.

Genomic sequence

Deactivated

Propagation conditions

Bacterial hosts

1124

Reference

Can. J. Microbiol. 1982. 28:180-189.

Remarks

History

History

Isolated by

S. M. Lesley and I. Sinha,
CRBI.

Date

07-1979

Received from

S. M. Lesley,
Chemistry and Biology Research Institute,
Research Branch,
Agriculture Canada,
Ottawa, ON. Canada,
K1A 0C6

Date

21-06-1982

Source

Local soil, Ottawa, Ontario, Canada.

Updated at

2024-01-16