

HER number
161

Identification

<i>Name</i> 161	<i>Morphotype</i> C1 (Podophage)	<i>Other designations</i>
--------------------	-------------------------------------	---------------------------

Taxonomy

<i>Realm</i>	<i>Kingdom</i>	<i>Phylum</i>	<i>Class</i>
<i>Order</i>	<i>Family</i> ?1	<i>Genus</i> <i>Lederbergvirus</i>	<i>Species</i> <i>Lederbergvirus P22</i>

Images

Electron Micrograph

Image
FHR05V

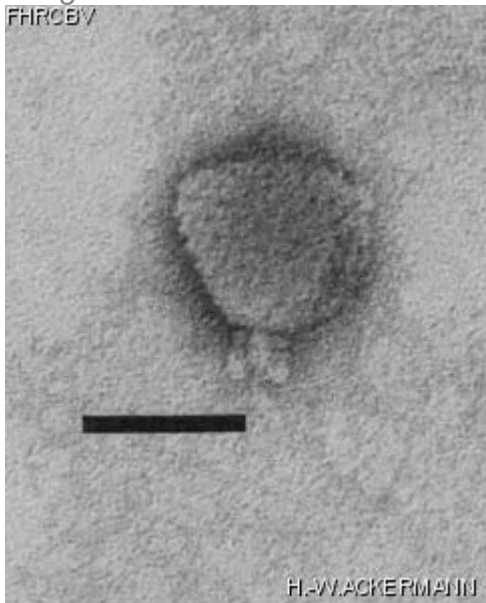


Image description

Magnification: 297,000X

Bar: 50 nm

Staining: UA

<i>Characteristics</i> Propagate by *S. typhimurium* LT2 *S. choleraesuis* subsp. *choleraesuis* serotype *typhimurium* Plaques: 1.0 mm, target-type General transducing phage Maintenance: popagation on TPB and TPA medium, preservation on TPB medium	<i>Genomic sequence</i> Activated
Propagation conditions	
<i>Bacterial hosts</i> 1023	
<i>Reference</i> Zinder ND, Lederberg J. 1952. J. Bacteriol. 64:679. Poteete, A.R. In The Bacteriophages, vol. 2 pp. 647-682. R. Calendar, ed., Plenum Press, New-York, 1988	
<i>Remarks</i>	
History	
<i>History</i>	
Received from Dr. Tetsuo Iino, Tokio University	Date
Received from Dr T.S. Dhillon, Department of Botany, University of Hong-Kong, Hong-Kong	Date 12-01-83
<i>Source</i> Joshua Lederberg	
<i>Updated at</i> 2024-01-16	