

HER number
166

Identification

<i>Name</i> VP6		<i>Morphotype</i> B1 (Siphophage)	
<i>Order</i>	<i>Family</i> ?1	<i>Genus</i>	<i>Species</i>

Other designations

Taxonomy

<i>Class</i>	<i>Realm</i>	<i>Kingdom</i>	
--------------	--------------	----------------	--

Images

Electron Micrograph
Image
FHIRCEV

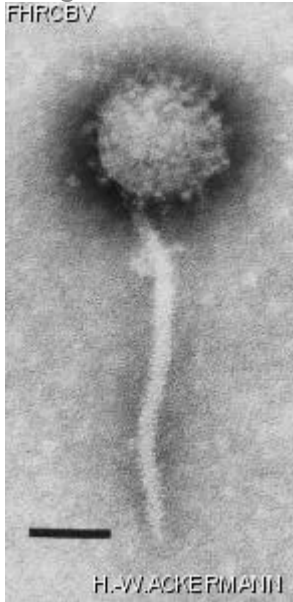


Image description
Magnification: 297,000X
Bar: 50 nm
Staining: PTB

Characteristics
Plaques : 0.5 mm, veiled.
Capsid covered with spherical projections.
Relative of VP3.

Genomic sequence
Deactivated

Propagation conditions

Bacterial hosts

[1165](#)

Reference

Koga, T., S. Toyoshima, and T. Kawata. 1982. Morphological varieties and host ranges of *Vibrio parahaemolyticus* bacteriophages isolated from seawater. Appl. Environ. Microbiol. 44:466-470.

Remarks

History

History

Isolated by

T. Koga and T. Kawata
Tokushima,
Japan

Date

06-1980

Received from

Dr Tomio Kawata,
Department of Food Microbiology,
Tokushima University School of Medecine,
Tokushima,
770,
Japan

Date

21-02-1983

Updated at

2024-01-16