

HER number
172

Identification

Name
Erh1

Morphotype
C3 (Podophage)

Order

Family
?1

Genus

Species

Other designations

Taxonomy

Class

Realm

Kingdom

Images

Electron Micrograph

Image
FHRCBIV

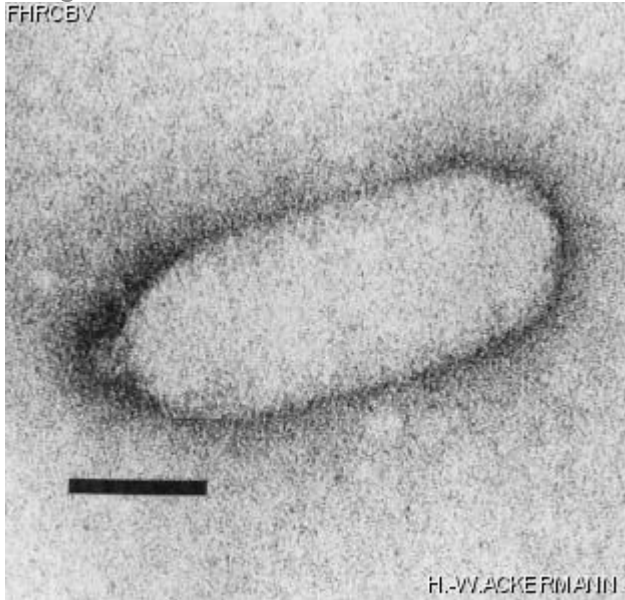


Image description

Magnification: 297,000X

Bar: 50 nm

Staining: UA

Characteristics

Plaques: 0.1 mm, clear.

Virulent.

No DNA homology with 1/M61-25, C2, 7-11, 13/a, Esc-7-11

G+C=37%

Genomic sequence

Deactivated

Propagation conditions

Bacterial hosts

[1172](#)

Reference

Kozloff, L.M., V. Chapman, and S. Delong. 1981. Defective packaging of unusual DNA in a virulent *Erwinia* phage, Erh1. Progr. Clin. Biol. Res. 64:253-269.

Remarks

Held in the ATCC collection
Destroys the ice nucleating activity of its host before lysis
Many phage particles appear defective and infectious centers can be formed by complementation and multiple infection.

History

History

Isolated by

L.M. Kozloff,
Denver, CO,
USA

Date

Received from

Lloyd M. Kozloff,
Dean, Graduate division,
University of California, S-140,
San Fransisco, CA 94143,
USA

Date

11-03-1983

Updated at

2024-01-16