

*HER number*  
181

## Identification

*Name*  
HM7

*Morphotype*  
B1 (Siphophage)

*Order*

*Family*  
?1

*Genus*

*Species*

*Other designations*

## Taxonomy

*Class*

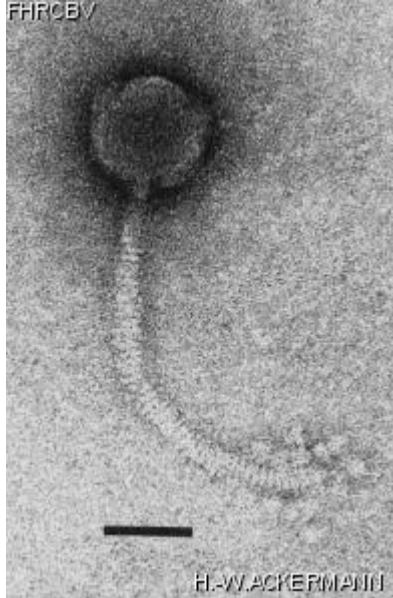
*Realm*

*Kingdom*

## Images

*Electron Micrograph*

*Image*



*Image description*

Magnification: 297,000X

Bar: 50 nm

Staining: UA

*Characteristics*

Plaques: 0.5 mm, clear.

Ca<sup>2+</sup> (2mM) can be used to aid adsorption and growth

Phage endolysin is a N-acetylmuramyl-L-alanine amidase

*Genomic sequence*

Deactivated

## Propagation conditions

### *Bacterial hosts*

[1181](#)

### *Reference*

Hongo, M. and A. Murata. 1965. Bacteriophages of \*Clostridium saccharoperbutylacetonicum\*. I. Some characteristics of the twelve phages obtained from the abnormally fermented broths. Agric. Biol. Chem. 29:1135-1139.

### *Remarks*

## History

### *History*

#### **Received from**

Dr. Seiya Ogata,  
Laboratory of Applied Microbiology,  
Department of Agricultural Chemistry,  
Kyushu University 46,  
Fukuoka 812,  
Japan

#### **Date**

15-06-1983

#### **Isolated by**

M. Hongo and A. Murata  
Laboratory of Applied Microbiology,  
Department of Agricultural Chemistry,  
Kyushu University,  
Fukuoka,  
Japan

#### **Date**

1960

### *Updated at*

2024-01-16