

*HER number*  
196

## Identification

<i>Name</i> 196	<i>Morphotype</i> A1 (Myophage)	<i>Other designations</i> ?Gal-1/R
--------------------	------------------------------------	---------------------------------------

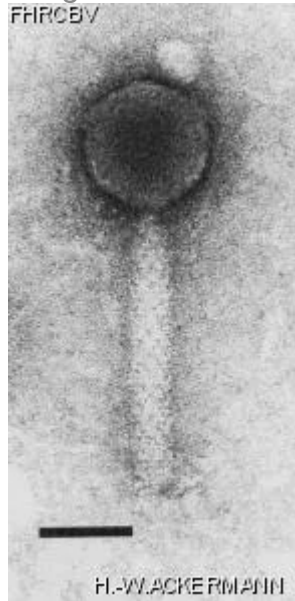
## Taxonomy

<i>Realm</i>	<i>Kingdom</i>	<i>Phylum</i>	<i>Class</i>
<i>Order</i>	<i>Family</i> ?1	<i>Genus</i>	<i>Species</i>

## Images

*Electron Micrograph*

*Image*



*Image description*

Magnification: 297,000X

Bar: 50 nm

Staining: UA

<i>Characteristics</i> Plaques: 0.1 mm, veiled. Typing phage. Specific for fast-growing Rhizobium strains nodulating Galega plants. No lysis seen with other fast-growing Rhizobia, such as *R. meliloti*, *R. loti*, *R. trifolii*, and *R. leguminosarum* or *R. phaseoli*. Patel's medium : Plant Soil, 49, 1978	<i>Genomic sequence</i> Deactivated
<b>Propagation conditions</b>	
<i>Bacterial hosts</i> 1196	
<i>Reference</i> Lindström, K., B.D.W. Jarvis, P.E. Lindström, and J.J. Patel. 1983. DNA homology, phage typing, and cross-nodulation studies of rhizobia infecting Galega species. Can. J. Microbiol. 29:781-789.	
<i>Remarks</i>	
<b>History</b>	
<i>History</i>	
<b>Isolated by</b> J.J. Patel, River bank	<b>Date</b> 12-1981
<b>Received from</b> Dr. J.J. Patel Applied Biochemistry Division, Department of Scientific and Industrial Research, Private Bag, Palmerston North, New Zealand	<b>Date</b> 18-10-1983
<i>Source</i> Soil, rhizosphere of *Galega officinalis* (goat's rue)	
<i>Updated at</i> 2024-01-16	