

HER number
213

Identification

<i>Name</i> I2-2		<i>Morphotype</i> F1	
<i>Order</i>	<i>Family</i> <i>Inoviridae</i>		<i>Species</i> <i>Lineavirus I22</i>

Other designations

Taxonomy

<i>Class</i>	<i>Realm</i>	<i>Kingdom</i>	
--------------	--------------	----------------	--

Images

Electron Micrograph
Image
FHRCBY

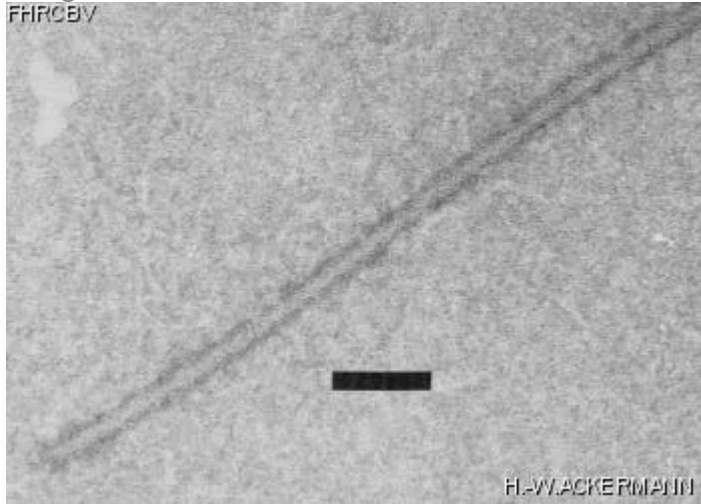


Image description
Magnification: 92,400X
Bar: 100 nm
Staining: UA

Characteristics
Plaques: 0.1mm, veiled.
Filamentous phage serologically related to phage Ike.
Marked variation in length.
Adsorbs to tips of IncI2 plasmid-encoded pili.
Alternative host : *S. typhimurium* M827-2(R721pilC).
Plasmid R721pilC is a derivative of plasmid R721 which produces pili constitutively.

Genomic sequence
Activated

Propagation conditions

Bacterial hosts

[1213](#)

Reference

1974. J. Med. Microbiol. 7:169-177.
Coetzee, J.N., D.E. Bradley, and R.W. Hedges. 1982. Phages Ia and I2-2: Incl plasmid-dependant bacteriophages. J. Gen. Microbiol. 128:2797-2804.

Remarks

History

History

Isolated by	Date
J.N. Coetzee Pretoria, South Africa	

Received from	Date
J.N. Coetzee Institute for Pathology, P.O. Box 2034 Pretoria 0001, South Africa	

Received from	Date
J. Schell-M. van Montagu Laboratorium voor Genetika Ledeganckstraat 35 B-9000 Gent, Belgium	17-10-1983

Updated at
2024-01-16