

HER number
222

Identification

Name C-1	Morphotype E1	Other designations	
-------------	------------------	--------------------	--

Taxonomy

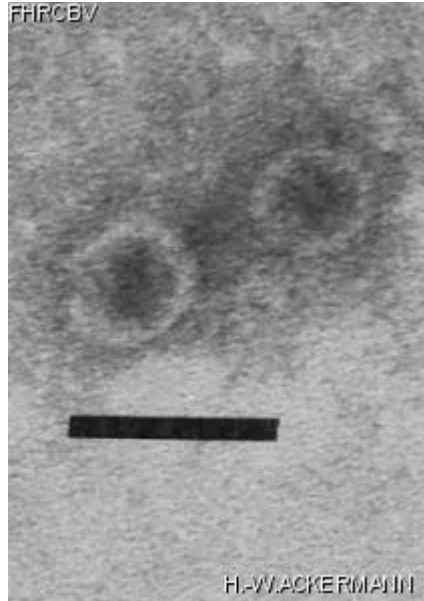
Realm <i>Riboviria</i>	Kingdom <i>Orthornavirae</i>	Phylum <i>Lenarviricota</i>	Class <i>Leviviricetes</i>
Order <i>Norzivirales</i>	Family <i>Fiersviridae</i>	Genus <i>Cunavirus</i>	Species <i>Cunavirus pretoriense</i>

Images

Electron Micrograph

Image

FHRCEW



H.-WACKERMANN

Image description

Magnification: 297,000X

Bar: 50 nm

Staining: UA

Characteristics

Veiled plaques with halo, 0.5 mm.
RNA-containing phage.
Adsorbs to sides of IncC plasmid-coded pili.
Mostly only *Salmonella* strains carrying the plasmid are lysed.

Genomic sequence

Activated

Propagation conditions

Bacterial hosts

1222

Reference

Sirgel, F.A., C.N. Coetzee, R.W. Hedges, and G. Lecatsas. 1981. Phage C-1: an IncC group plasmid-specific phage. J. Gen Microbiol. 122: 155-160.

Remarks

History

History

Received from

J. Schell-M. van Montagu
Laboratorium voor Genetika
Ledeganckstraat 35
B-9000 Gent, Belgium

Date

10-17-1983

Received from

J.N. Coetzee
Institute for Pathology
P.O. Box 2034
Pretoria 0001
South Africa

Date

Isolated by

J.N. Coetzee
Institute for Pathology
P.O. Box 2034
Pretoria 0001
South Africa

Date

1980

Source

Sewage

Updated at

2024-01-17