

HER number
226

Identification

<i>Name</i> 226	<i>Morphotype</i> B1 (Siphophage)	<i>Other designations</i>
--------------------	--------------------------------------	---------------------------

Taxonomy

<i>Realm</i>	<i>Kingdom</i>	<i>Phylum</i>	<i>Class</i>
<i>Order</i>	<i>Family</i> ?1	<i>Genus</i> <i>Biseptimavirus</i>	<i>Species</i> <i>Biseptimavirus bv77</i>

Images

Electron Micrograph

Image
FHRCBY

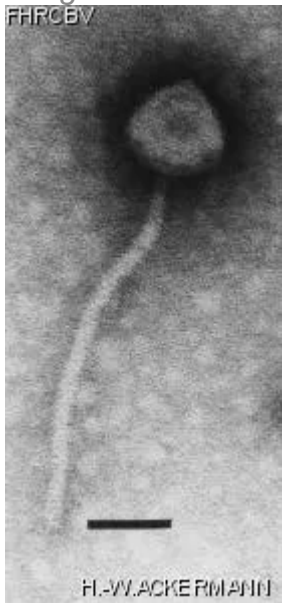


Image description

Magnification: 297,000X

Bar: 50 nm

Staining: PT

Characteristics

Clear plaques smaller than 0.1 mm.
Serogroup F, part of international typing set.

Genomic sequence

Activated

Propagation conditions	
<i>Bacterial hosts</i> 1226	
<i>Reference</i> Lapchine, L., and L. Enjalbert. 1965. étude morphologique de quelques phages staphylococciques. J. Microsc. 4:33-42.	
<i>Remarks</i>	
History	
<i>History</i>	
Received from International Reference Center for Staphylococcus Phage Typing Colindale, London England	Date
Received from E. Pauline Ewan Head Special Bacteriology Section Bureau of Microbiology LCDC Tunney's Pasture, Ottawa, Ontario, K1A 0L2 Canada	Date 14-01-1985
<i>Source</i>	
<i>Updated at</i> 2024-01-17	