

HER number  
240

## Identification

Name  
pilH?

Morphotype  
E1

Order

Family  
?1

Genus

Species

Other designations  
H?

## Taxonomy

Class

Realm

Kingdom

## Images

Electron Micrograph

Image  
FHRCEV

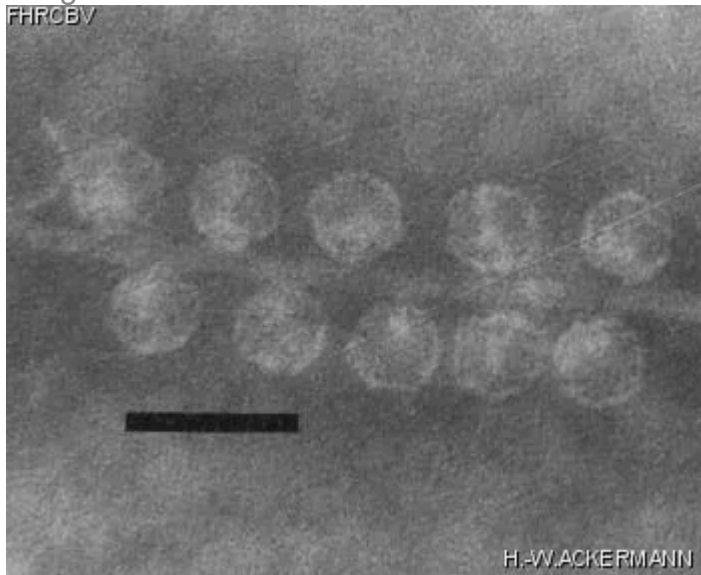


Image description

Magnification: 297,000X

Bar: 50 nm

Staining: PTB

Characteristics

Veiled plaques, 0.1 to 1mm.  
Adsorbs to IncHI and IncHII plasmid-coded pili.  
Preparations are rich in broken pili with adsorbed phages.  
Propagating strain : \*E. coli\* K12 containing R27::TnlacZ  
(resistant to kanamycin and tetracycline)

Genomic sequence

Deactivated

## Propagation conditions

### *Bacterial hosts*

[1240](#)

### *Reference*

Coetzee, J.N., D.E. Bradley, J. Fleming, L. du Toit, V.M. Hughes, and R.W. Hedges. 1985. Phage pilH?: a phage which adsorbs to IncHI and IncHII plasmid-coded pili. J. Gen. Microbiol. 131:1115-1121.

### *Remarks*

## History

### *History*

**Received from**

(replacement phage)  
Dr Diane E. Taylor  
University of Alberta  
Department of Medical Microbiology and Infectious diseases  
Edmonton, Alberta, T6G 2H7

**Date**

07-01-1993

**Received from**

J.N. Coetzee  
Institute for Pathology  
P.O. Box 2034  
Pretoria 0001  
South Africa

**Date**

27-03-1987

**Isolated by**

J.N. Coetzee  
Pretoria, South Africa

**Date**

early 1980?s

### *Updated at*

2024-01-17