

HER number

248

Identification

Name

KSY1

Morphotype

C3 (Podophage)

Other designations

Taxonomy

Realm

Duplodnaviria

Kingdom

Heunggongvirae

Phylum

[Uroviricota](#)

Class

Caudoviricetes

Order

Family

Genus

Chopinvirus

Species

Chopinvirus KSY1

Images

Electron Micrograph

Image

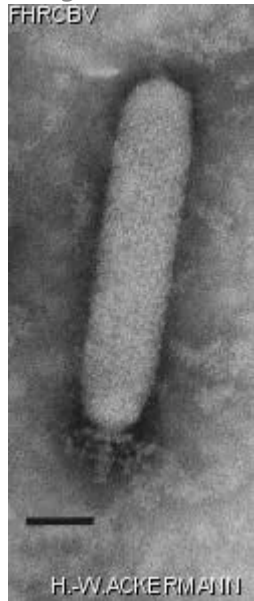


Image description

Magnification: 297,000X

Bar: 50 nm

Staining: PT

<i>Characteristics</i> Plaques of 1 mm with halo after two days.	<i>Genomic sequence</i> Activated
---	--------------------------------------

Propagation conditions

Bacterial hosts

1248

Reference

Kalso, S., E.-L. Nurmiäho-Lassila, M.-L. Saxelin, and V. Sundman. 1986. Some characteristics of the lactic streptococcal phage KSY1. *Milchwissenschaft* 41:65-68.

Remarks

Held in another permanent collection :
Department of General Microbiology
University of Helsinki
Mannerheimintie 172, SF-00280 Helsinki 28
Finland

History

History

Received from

Dr Maija-Liisa Saxelin
Product Development Division
Research and Development Department
VALIO Finnish Cooperative Dairies Association
P.O. Box 390, SF-00101 Helsinki, Finland

Date

01-08-1986

Isolated by

Dr Maija-Liisa Saxelin
Department of General Microbiology
University of Helsinki
Finland

Date

1977

Source

Finnish cultured milk product "viili"

Updated at
2024-01-17