

*HER number*  
254

## Identification

|                    |                         |                           |
|--------------------|-------------------------|---------------------------|
| <i>Name</i><br>254 | <i>Morphotype</i><br>D3 | <i>Other designations</i> |
|--------------------|-------------------------|---------------------------|

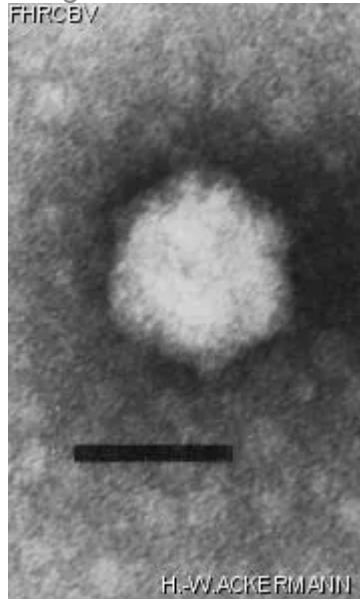
## Taxonomy

|              |  |                                     |   |
|--------------|--|-------------------------------------|---|
| <i>Realm</i> | <i>Kingdom</i>                         | <i>Phylum</i>                       | <i>Class</i>                              |
| <i>Order</i> | <i>Family</i><br><i>Corticoviridae</i> | <i>Genus</i><br><i>Corticovirus</i> | <i>Species</i><br><i>Corticovirus PM2</i> |

## Images

*Electron Micrograph*

*Image*



*Image description*

Magnification: 297,000X

Bar: 50 nm

Staining: PT

|  |                                      |
|--|--------------------------------------|
| <i>Characteristics</i><br>Clear plaques of 1.5 mm with halo of 1.5-2 mm.<br>Complex shell, contains lipid, ether- and chloroform-sensitive.  | <i>Genomic sequence</i><br>Activated |
| <b>Propagation conditions</b>  |                                      |
| <i>Bacterial hosts</i><br>1254   |                                      |
| <i>Reference</i><br>Franklin, R.M., R. Marcoli, H. Satake, R. Schéfer, and D. Schneider. 1977. Recent studies on the structure of bacteriophage PM2. Med. Microbiol. Immunol. 164: 87-95.<br><br>Ménnisté, R.H., H.M. Kivelé, L. Paulin, D.H. Bamford, and J.K.H. Bamford. 1999. The complete genome sequence of PM2, the first lipid-containing bacterial virus to be isolated. Virology 262:355-363. |                                      |
| <i>Remarks</i><br>ATCC No. 27025-B1.<br>Propagate and titer on very young cultures only.<br>May be inhibited by more than 1.5% agar.   |                                      |
| <b>History</b>   |                                      |
| <i>History</i>   |                                      |
| <b>Isolated by</b><br>R.T. Espejo  | <b>Date</b>                          |
| <b>Received from</b><br>R.T. Espejo  | <b>Date</b>                          |
| <b>Received from</b><br>ATCC<br>12301 Parklawn Drive, Rockville, MD, 20852-1776<br>USA   | <b>Date</b><br>26-05-1999            |
| <i>Source</i><br>Ocean water, Pacific Ocean, off coast of Chile  |                                      |
| <i>Updated at</i><br>2024-01-17  |                                      |