

HER number

278

Identification

Name
Tohama

Morphotype
B1 (Siphophage)

Other designations

Taxonomy

Realm
Duplodnaviria

Kingdom
Heunggongvirae

Phylum
[Uroviricota](#)

Class
Caudoviricetes

Order

Family

Genus

Species

Images

Electron Micrograph

Image

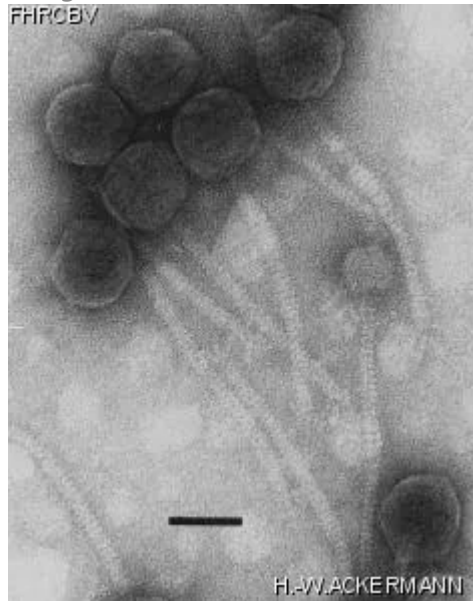


Image description

Magnification: 297,000X

Bar: 50 nm

Staining: UA

<i>Characteristics</i> Plaques of 1.0-1.5 mm.	<i>Genomic sequence</i> Deactivated
--	--

Propagation conditions

Bacterial hosts

1278

Reference

Lapaeva, I.A., S.M. Mebel, N.A. Pereverzev, and L.N. Sinyashina. 1980. *Bordetella pertussis* bacteriophage. Zh. Mikrobiol. Epidemiol. Immunobiol. 85-90.

Mebel, S., I.A. Lapaeva, S. Rustenbach, and I. Uerling. 1981. Spontaneous release of phage from strains of *Bordetella pertussis* used for vaccine production. FEMS Microbiol. Lett. 12: 233-235.

Remarks

Morphologically unstable in cesium chloride gradient at average density 1.45 g/cm³. Also held in the Collection of the WHO Collaborating Center for Research and Reference on *Bordetella pertussis*, Gamaleya Institute, Moscow.

History

History

Received from

Dr I.A. Lapaeva
Laboratory of Respiratory Infections
Gamaleya Research Institute of Epidemiology
Moscow 123098, Gamaleya st. 18, Russia

Date

12-10-1986

Isolated by

Irina Lapaeva
Gamaleya Institute of Epidemiology and Microbiology
Moscow

Date

1986

Source

Bordetella pertussis Tohama phase I

Updated at
2024-01-19