

HER number
354

Identification

| | | |
|--------------------|-------------------------|---------------------------|
| <i>Name</i> 354 | <i>Morphotype</i> F1 | <i>Other designations</i> |
|--------------------|-------------------------|---------------------------|

Taxonomy

| | | | |
|--------------|---------------------|---------------|----------------|
| <i>Realm</i> | <i>Kingdom</i> | <i>Phylum</i> | <i>Class</i> |
| <i>Order</i> | <i>Family</i> ?1 | <i>Genus</i> | <i>Species</i> |

Images

Electron Micrograph

Image

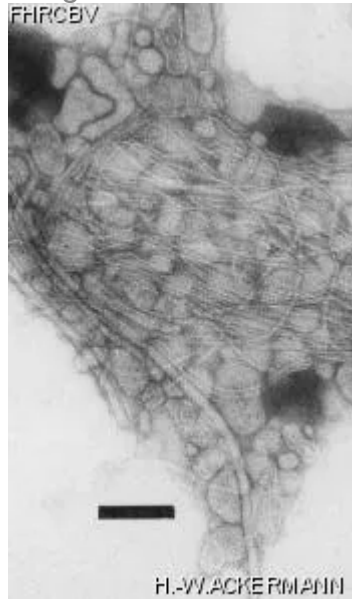


Image description

Magnification: 92,400X

Bar: 100 nm

Staining: PT

Characteristics
Plaques: 1 mm, veiled

Genomic sequence
Deactivated

Propagation conditions

Bacterial hosts

1354

Reference

Jouravleva, E.A. and coll. 1998. Characterization and possible functions of a new filamentous bacteriophage from *Vibrio cholerae* O139. Microbiology. 144: 315-324.

Remarks

History

History

Received from

Dr Richard A. Finkelstein
Department of Molecular Microbiology and Immunology
DC385.00, Allton Building 208, 308 Business Loop 70 W.
University of Missouri-Columbia, Columbia, MO 65203

Date

14-12-1998

Received from

Dr John Albert
International Center for Diarrhoeal Disease Research
Dhaka, Bangladesh

Date

1994

Isolated by

Dr John Albert

Date

1994

Source

Patient stool

Updated at

2024-01-19