

HER number
356

Identification

<i>Name</i> 356	<i>Morphotype</i> B1 (Siphophage)	<i>Other designations</i> Beta
--------------------	--------------------------------------	-----------------------------------

Taxonomy

<i>Realm</i>	<i>Kingdom</i>	<i>Phylum</i>	<i>Class</i>
<i>Order</i>	<i>Family</i> ?1	<i>Genus</i>	<i>Species</i>

Images

Electron Micrograph

Image

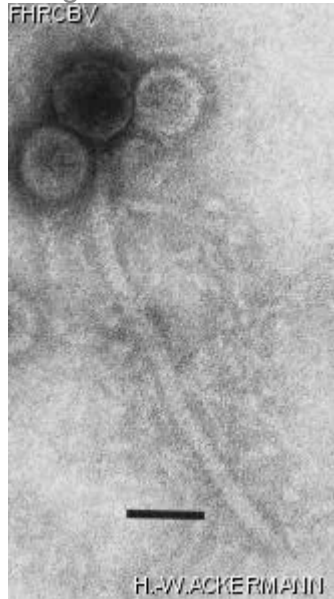


Image description

Magnification: 297,000X

Bar: 50 nm

Staining: UA

Characteristics
Clear plaques of 0.5 mm.

Genomic sequence
Deactivated

Propagation conditions

Bacterial hosts

1356

Reference

Mathews, M.M. and coll. 1966. Morphological observations on some diphtherial phages. Virology. 29: 402-409.

Remarks

History

History

Isolated by

Dr Sheila Toshach
School of Hygiene
Toronto, Ontario, Canada

Date

Received from

Dr N. Groman
Dept. of Microbiology
School of Medicine
University of Washington
Seattle, WA 98195, USA

Date

03-08-1989

Received from

Dr Victor J. Greeman
Dept. of Public Health
University of Washington
USA

Date

1950

Source

Filtered lysate of a virulent *C. diptheriae*

Updated at

2024-01-19