

HER number
366

Identification

<i>Name</i> 366	<i>Morphotype</i> A2 (Myophage)	<i>Other designations</i>
--------------------	------------------------------------	---------------------------

Taxonomy

<i>Realm</i>	<i>Kingdom</i>	<i>Phylum</i>	<i>Class</i>
<i>Order</i>	<i>Family</i> ?1	<i>Genus</i>	<i>Species</i>

Images

Electron Micrograph

Image
FHRCEV

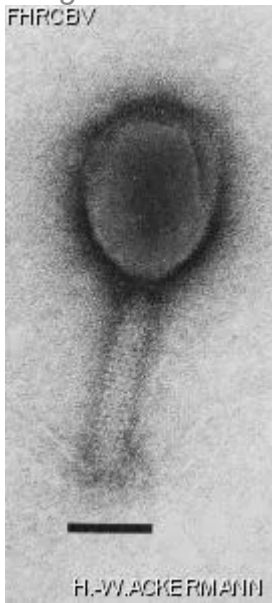


Image description

Magnification: 297,000X
Bar: 50 nm
Staining: UA

Characteristics

Clear plaques of 1.0 mm.
Uses the OmpF porin plus LPS as receptor.

Genomic sequence

Deactivated

Propagation conditions

Bacterial hosts

1366

Reference

Hancock, R.E., P. Reeves. 1975. Bacteriophage resistance in *Escherichia coli* K-12: general pattern of resistance. J. Bacteriol. 121: 983-993.

Remarks

History

History

Received from

Thomas Silhavy

Date

Received from

Dr Spencer A. Benson
Dept. of Microbiology
University of Maryland
College Park, Maryland 20742-4451, USA

Date

20-04-1990

Source

Updated at

2024-01-19