

HER number
389

Identification

<i>Name</i> 389	<i>Morphotype</i> A1 (Myophage)	<i>Other designations</i>
--------------------	------------------------------------	---------------------------

Taxonomy

<i>Realm</i>	<i>Kingdom</i>	<i>Phylum</i>	<i>Class</i>
<i>Order</i>	<i>Family</i> ?1	<i>Genus</i>	<i>Species</i>

Images

Electron Micrograph

Image
FIRCEBY

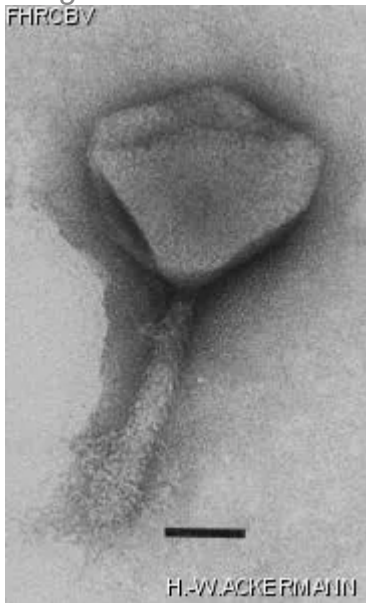


Image description

Magnification: 297,000X

Bar: 50 nm

Staining: UA

Characteristics
Clear plaques of 1.5 mm.

Genomic sequence
Deactivated

Propagation conditions

Bacterial hosts

1371

Reference

Pate, J.L., S.J. Petzold, L.Y.E. Chang. 1979. Phages for the gliding bacterium *Cytophaga johnsonae* that infect only motile cells. Curr. Microbiol. 2: 257-262.

Remarks

History

History

Isolated by

Dr Jack L. Pate
Dept. of Bacteriology
University of Wisconsin-Madison
1550 Linden Drive
Madison, WI 53706, USA

Date

1979

Received from

A. Quinones
Dept. of Bacteriology
University of Wisconsin
Madison, WI 53706, USA

Date

24-04-1991

Source

Pond water

Updated at

2024-01-22