

HER number  
393

## Identification

Name 393	Morphotype A1 (Myophage)	Other designations
-------------	-----------------------------	--------------------

## Taxonomy

Realm	Kingdom	Phylum	Class
Order	Family ?1	Genus	Species

## Images

Electron Micrograph

Image  
FHRCEV

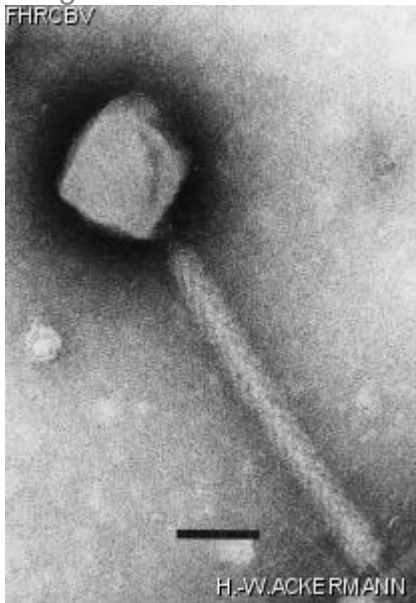


Image description

Magnification: 297,000X

Bar: 50 nm

Staining: PTB

Characteristics

Plaques are imperceptible: 0.1 mm, veiled.

Genomic sequence

Deactivated

Propagation conditions	
<i>Bacterial hosts</i> 1393	
<i>Reference</i> Ackermann, H.-W. and coll. 1994. P1D, a new member of the P1 bacteriophage group.	
<i>Remarks</i> Variant of P1; Slightly longer tail, almost no head size variants, different host range and plaque size. Plaques easier to observe at 42°C than at 37°C; also produced spontaneously. Other host strains: HER 1128(*E. coli* O15), Cubizolles, blanchon, LY265.	
History	
<i>History</i> <b>Isolated by</b> A. Reynaud and H.-W. Ackermann Laboratory of Ackermann	<b>Date</b> 12-1991
<i>Source</i> *E. coli* O103 4472 (also strains GV8 and 2198) after UV + mitomycin C induction.	
<i>Updated at</i> 2024-01-22	