

*HER number*  
395

## Identification

<i>Name</i> 395	<i>Morphotype</i> B3 (Siphophage)	<i>Other designations</i>
--------------------	--------------------------------------	---------------------------

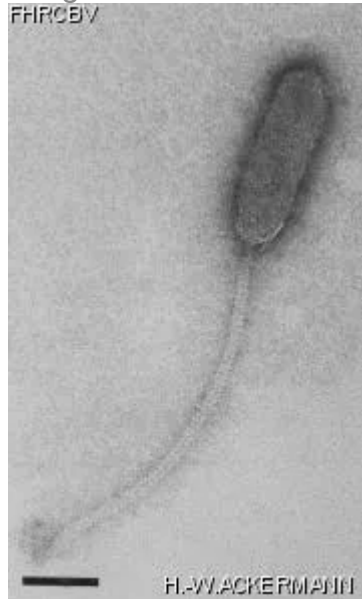
## Taxonomy

<i>Realm</i>	<i>Kingdom</i>	<i>Phylum</i>	<i>Class</i>
<i>Order</i>	<i>Family</i> ?1	<i>Genus</i>	<i>Species</i>

## Images

*Electron Micrograph*

*Image*



*Image description*

Magnification: 297,000X

Bar: 50 nm

Staining: UA

*Characteristics*  
Clear plaques of 0.5 mm.

*Genomic sequence*  
Deactivated

Propagation conditions	
<i>Bacterial hosts</i> 1395	
<i>Reference</i> Jia P. and coll. 1986. Properties of six <i>Bacillus subtilis</i> BF7658 bacteriophages. Chin. J. Virol. 2: 360-365.	
<i>Remarks</i> Must have a common receptor with B3 and B1 type phages of <i>B. subtilis</i> . Typing phage (No.9) of <i>B. subtilis</i> .	
History	
<i>History</i>	
<b>Received from</b> Dr Maoxiao Yu Institute of Microbiology Academia Sinica Zhong Guan Cun, Beijing, P.R. China	<b>Date</b> 02-08-1989
<b>Isolated by</b> Dr Maoxiao Yu Wushi	<b>Date</b> 1984
<i>Source</i> Fermentation broth, enzyme plant.	
<i>Updated at</i> 2024-01-22	