

HER number
444

Identification

<i>Name</i> 444	<i>Morphotype</i> C1 (Podophage)	<i>Other designations</i>
--------------------	-------------------------------------	---------------------------

Taxonomy

<i>Realm</i>	<i>Kingdom</i>	<i>Phylum</i>	<i>Class</i>
<i>Order</i>	<i>Family</i> ?1	<i>Genus</i>	<i>Species</i>

Images

Electron Micrograph

Image
FHRCBV

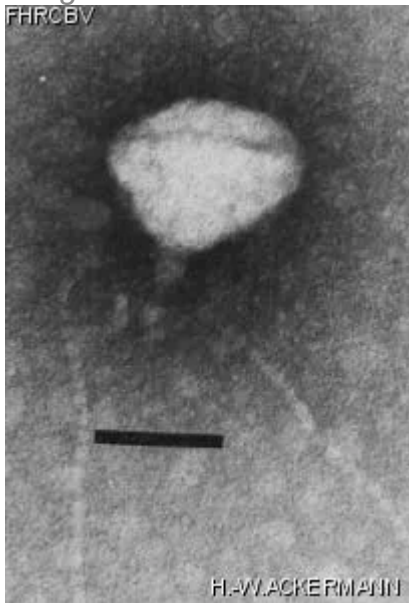


Image description

Magnification: 297,000X

Bar: 50 nm

Staining: PT

Characteristics
Plaques: 0.5 mm, clear.

Genomic sequence
Deactivated

Propagation conditions

Bacterial hosts

1444

Reference

Dela Cruz, D. Comparative virulence and host range of phages of enterobacteria and related organisms. Thesis, University of Santo Tomas.

Remarks

Long flexible, beaded tail fibers.

Use nutrient agar and incubate at 22°C for phage titration (reduction of levan production).

History

History

Isolated by

Donna dela Cruz

Date

07-2002

Received from

Donna dela Cruz

University of Santo Tomas

Roque Thesis Laboratory

Graduate School, Espana, Manila, 1008 Philippines

Date

13-02-2003

Source

Water, Pasig river, Manila, Philippines.

Updated at

2024-01-22