

HER number
51

Identification

<i>Name</i> I		<i>Morphotype</i> C1 (Podophage)	
<i>Order</i>	<i>Family</i> ?1	<i>Genus</i>	<i>Species</i> I

Other designations
Group I, 163, ATCC 14100-B1

Taxonomy

<i>Class</i>	<i>Realm</i>	<i>Kingdom</i>	
--------------	--------------	----------------	--

Images

Electron Micrograph
Image

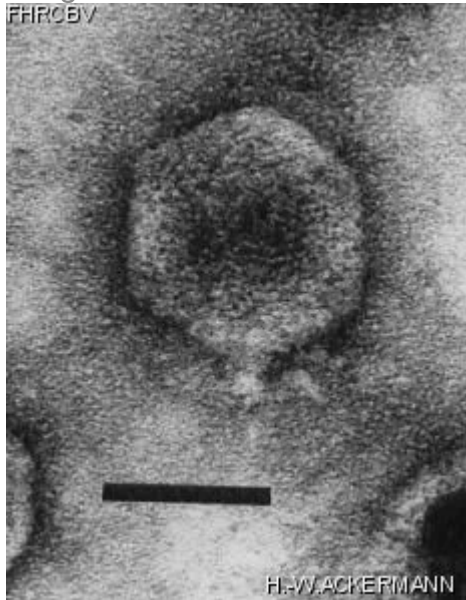


Image description
Magnification: 297,000X
Bar: 50 nm
Staining: UA

Characteristics
Plaques: 0.5mm, clear.
Typing phage No. 1 of set of Mukerjee *et al*.
Typing phage No. 1 of set of Lee and Furniss.

Genomic sequence
Deactivated

Propagation conditions

Bacterial hosts

[1051](#)

Reference

Chatterjee, S. N., J. Das, D. Barua. 1965. Electron microscopy of cholera phages. India J. Med. Res. 53:934-937.

Remarks

Not available from the Félix dâ€™Hérelle reference center for bacterial viruses, please contact ATCC for the distribution of this phage.

History

History

Received from

S. Mukerjee,
Indian Institute for biochemistry and experimental
medecine,
Calcutta;
WHO, International Reference Center for *Vibrio* Phage
Typing, Calcutta, India.

Date

Received from

ATCC

Date

11-1979

Updated at

2024-01-15