

HER number
83

Identification

Name
2389

Morphotype
B1 (Siphophage)

Order

Family
?1

Species
Psavirus PSA

Other designations

Taxonomy

Class

Realm

Kingdom

Images

Electron Micrograph
Image

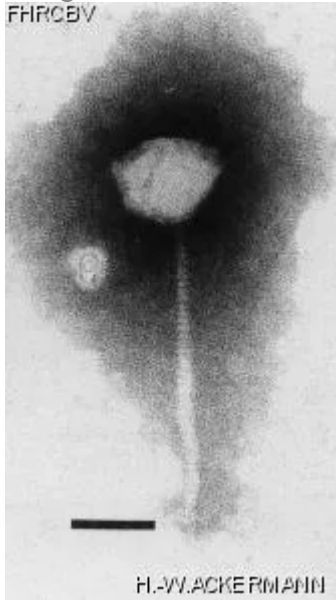


Image description
Magnification: 297,000X
Bar: 50 nm
Staining: PTA

Characteristics
Plaques: mm, clear.
Part of *L. Monocytogenes* typing set.
Representative of morphological group III.

Genomic sequence
Activated

Propagation conditions

Bacterial hosts

[1083](#)

Reference

Remarks

History

History

Isolated by

A. Audurier and J. Rocourt,
Fac. Med.
Univ. Nantes,
France.

Date

Received from

Dr André Audurier,
Laboratoire de Microbiologie,
Hôpital Trousseau,
Centre hospitalier universitaire,
37044 Tours Cédex,
France.

Date

3-1-1982

Updated at

2024-01-16