

*HER number*

85

## Identification

*Name*

25

*Morphotype*

A2 (Myophage)

*Other designations*

## Taxonomy

*Realm*

Duplodnaviria

*Kingdom*

Heunggongvirae

*Phylum*

[Uroviricota](#)

*Class*

Caudoviricetes

*Order*

Pantevenviraales

*Family*

Straboviridae

*Genus*

Tulanevirus

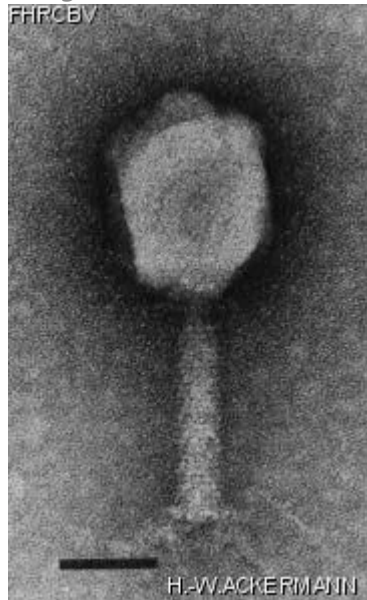
*Species*

Tulanevirus  
bteighttwo

## Images

*Electron Micrograph*

*Image*



*Image description*

Magnification: 297,000X

Bar: 50 nm

Staining: UAB

*Characteristics*

Plaques: clear.  
Serological group 3  
Virulent  
Does not hybridize with T-even phage DNA.  
Typing phage.

*Genomic sequence*

Activated

## Propagation conditions

*Bacterial hosts*

1085

*Reference*

Popoff, M. and J.-F. Vieu.1970. bactériophages et lysotypie d'\*Aeromonas salmonicida\*. Compt. Rend. 270:2219-2222.

*Remarks*

## History

*History*

**Received from**

Dr Michel Popoff,  
Institut Pasteur,  
Service des entérobactéries,  
25 rue du Docteur Roux,  
75724 Paris Cedex 15,  
France

**Date**

3-1-1982

**Isolated by**

Dr Michel Popoff,  
Laboratoire d'Ichthyopathologie,  
Station de virologie et d'immunologie,  
INRA,  
78 Thiverval-Grignon,  
France.

**Date**

1969

*Source*

Fish farm, Dept. Eure, France

*Updated at*

2024-01-16