

HER number
86

Identification

<i>Name</i> 1A		<i>Morphotype</i> B1 (Siphophage)	
<i>Order</i>	<i>Family</i> ?1	<i>Genus</i>	<i>Species</i>

Other designations

Taxonomy

<i>Class</i>	<i>Realm</i>	<i>Kingdom</i>	
--------------	--------------	----------------	--

Images

Electron Micrograph
Image
FHIRCEV

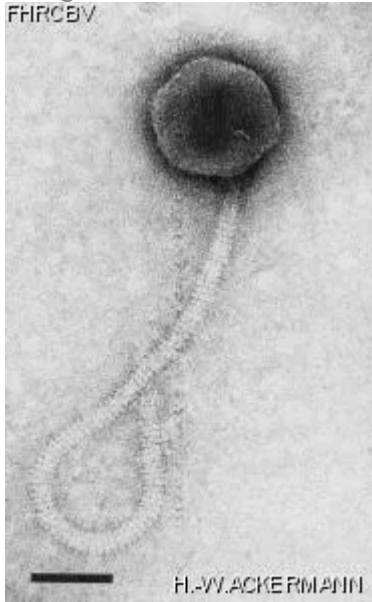


Image description
Magnification: 297,000X
Bar: 50 nm
Staining: UAB

Characteristics
Plaques: 0.5mm, clear.
Collar present or not.
Morphologically identical with phage 2A (2070).
Part of typing set.

Genomic sequence
Deactivated

Propagation conditions

Bacterial hosts

[1086](#)

Reference

Yousten, A. A., H. de Barjac, J. Hedrick, V. Cosmao Dumanoir, and P. Myers. 1980. Comparison between bacteriophage typing and serotyping for the differentiation of *Bacillus sphaericus* strains. Ann. Microbiol. 131B: 297-308.

Remarks

Set of phage measure taken in ME are included in the original form.

History

History

Isolated by

Dr J. Hedrick,
Biology Department (now Food Science),
Blacksburg, VA,
USA.

Date

1978

Received from

Dr A. Yousten,
Biology Department,
Virginia Polytechnic Institute and State University,
Blacksburg, Va 24061,
USA.

Date

28-04-1982

Updated at

2024-01-16