

HER number

93

Identification

Name
P1kc

Morphotype
A1 (Myophage)

Other designations
ATCC25404-B1

Taxonomy

Realm
Duplodnaviria

Kingdom
Heunggongvirae

Phylum
[*Uroviricota*](#)

Class
Caudoviricetes

Order

Family

Genus

Species

Images

Electron Micrograph

Image

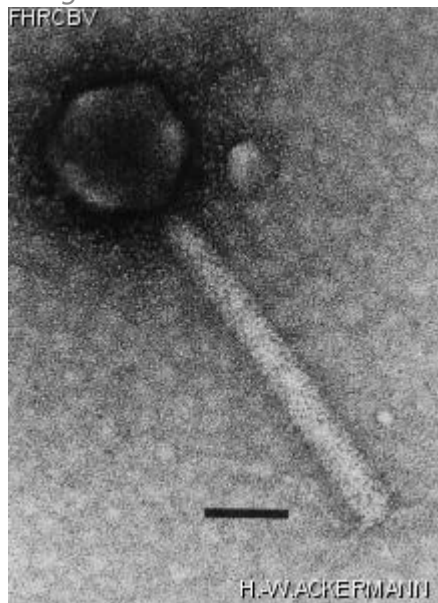


Image description

Magnification: 297,000X

Bar: 50 nm

Staining: UAB

Characteristics

Plaques: 0.1mm, clear.
Transducing phage.
Very small plaques on *E. coli*.
Lysis (CL) of *E. coli* K12 C600 and its derivatives
Lysis (CL) of *Shigella dysenteriae* and *Shigella sonnei* HER1020, 1031, 1043

Genomic sequence

Deactivated

Propagation conditions

Bacterial hosts

1275

Reference

Mise, K. 1971. Isolation and characterization of a new generalized transducing bacteriophage different from P1 in *Escherichia coli*. J Virol 7:168-75.

Remarks

Also held at ATCC, ATCC# 25404-B1

History

History

Received from

Dr. G. Drapeau,
Département de microbiologie,
Université de Montréal,
C. P. 6128, Succ. "A",
Montréal, Qc, Canada.

Date

29-03-1982

Received from

Dr. A. Sasarman,
Département de microbiologie,
Université de Montréal,
C. P. 6128, Succ. "A",
Montréal, Qc, Canada.

Date

Received from

P. Frédéricq,
Institut provincial de la Santé Publique,
Liège, Belgium.

Date

1965-1975

Source

From lysogenic *E. coli*.

Updated at

2024-01-16