

HER number

95

Identification

Name

χ

Morphotype

B1 (Siphophage)

Other designations

chi, VIII-13, φχ

Taxonomy

Realm

Duplodnaviria

Kingdom

Heunggongvirae

Phylum

[Uroviricota](#)

Class

Caudoviricetes

Order

Family

Casjensviridae

Genus

Chivirus

Species

Chivirus chi

Images

Electron Micrograph

Image

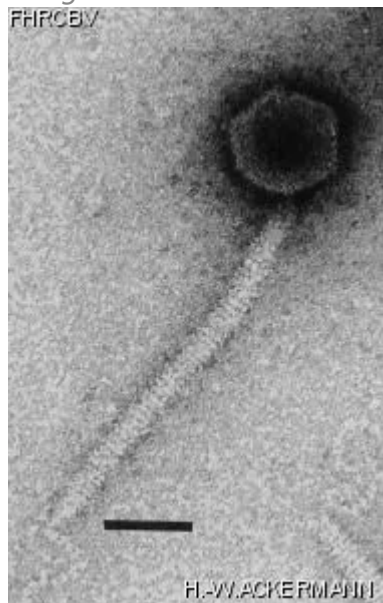


Image description

Magnification: 297,000X

Bar: 50 nm

Staining: UAB

Characteristics

Plaques: 0.5mm, more or less veiled.
Grimont: Géloses Difco 12g/l + Oxoid NB.
Try several host colonies.
Adsorb to flagella, specific to motile bacteria.
If necessary, mobilize the host strain before propagation.

Genomic sequence

Activated

Propagation conditions

Bacterial hosts

1095

Reference

Meynell, E. W. 1961. A phage ϕ c, which attacks motile bacteria. J. Gen. Microbiol. 25:253-290.

Remarks

History

History

Received from

Dr Francine Grimont,
Institut Pasteur,
Centre National de Référence des *Salmonella* et des
Shigella,
Unité des entérobactéries,
25 rue du Docteur Roux,
75724 Paris Cedex 15,
France

Date

4-06-1982

Unknown

Helsinki,
Institut Pasteur,
Centre National de Référence des *Salmonella* et des
Shigella,
Unité des entérobactéries,
25 rue du Docteur Roux,
75724 Paris Cedex 15,
France

Date

Received from

Dr. E. W. Meynell,
Department of bacteriology,
London school of hygiene and tropical medicine,
Keppel Street, London, W. C. I.,
England

Date

15-08-1972

Isolated by

V. Sertic and N. A. Boulgakov

Date

1935 ?

Source

Updated at

2024-01-16