

*HER number*  
117

## Identification

*Name*  
N2 Lesley

*Morphotype*  
C1 (Podophage)

*Order*

*Family*  
?1

*Genus*

*Species*

*Other designations*  
N2

## Taxonomy

*Class*

*Realm*

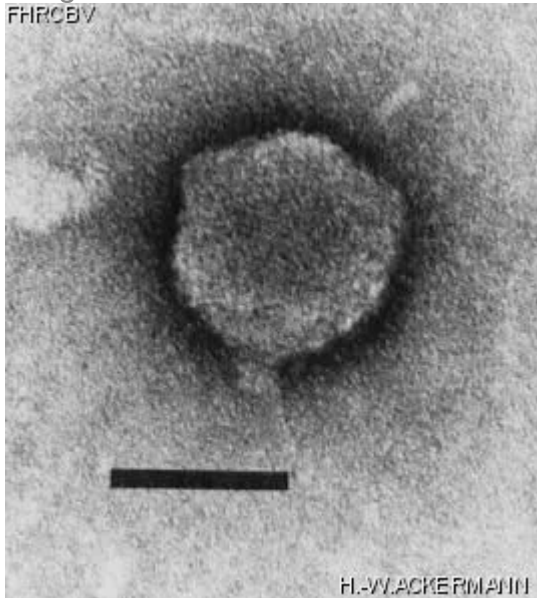
*Kingdom*

## Images

*Electron Micrograph*

*Image*

FHRCB.V



*Image description*

Magnification: 297,000X

Bar: 50 nm

Staining: UAB

*Characteristics*

Plaques: 0.1mm, veiled.

Typing phage.

Lesley: YSM double agar layer, 48h.

*Genomic sequence*

Deactivated

Propagation conditions

Bacterial hosts  
[1117](#)

Reference  
Can. J. Microbiol. 1982. 28:180-189.

Remarks

History

<i>History</i>	
<b>Isolated by</b> S. M. Lesley and I. Sinha, CRBI.	<b>Date</b> 05-1979
<b>Received from</b> S. M. Lesley, Chemistry and Biology Research Institute, Research Branch, Agriculture Canada, Ottawa, ON. Canada, K1A 0C6.	<b>Date</b> 21-06-1982

Updated at  
2024-01-16