

*HER number*  
118

## Identification

*Name*  
N3 Lesley

*Morphotype*  
A1 (Myophage)

*Order*

*Family*  
?1

*Species*  
*Emdodecavirus N3*

*Other designations*  
N3, 6a

## Taxonomy

*Class*

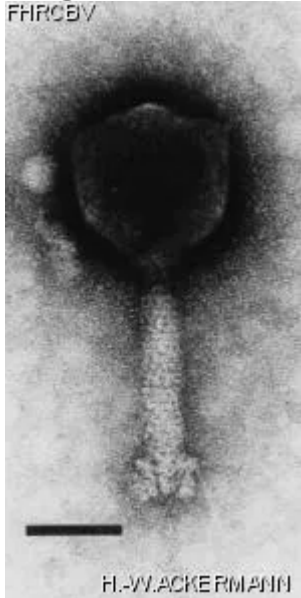
*Realm*

*Kingdom*

## Images

*Electron Micrograph*

*Image*



*Image description*

Magnification: 297,000X

Bar: 50 nm

Staining: UAB

*Characteristics*

Plaques: 0.1- 0.5mm, clear.

Typing phage.

Lesley: YSM double agar layer, 48h.

Lysate contains variable amount of NM1-type phage.

*Genomic sequence*

Activated

**Propagation conditions**

*Bacterial hosts*  
[1118](#)

*Reference*  
Can. J. Microbiol. 1982. 28:180-189.

*Remarks*

**History**

*History*

<b>Isolated by</b> S. M. Lesley and I. Sinha, CRBI.	<b>Date</b> 03-1979
--	------------------------

<b>Received from</b> S. M. Lesley, Chemistry and Biology Research Institute, Research Branch, Agriculture Canada, Ottawa, ON. Canada, K1A 0C6	<b>Date</b> 21-06-1982
--	---------------------------

*Updated at*  
2024-01-16