

HER number
124

Identification

Name
M4 Lesley

Morphotype
B1 (Siphophage)

Order

Family
?1

Genus

Species

Other designations
M4

Taxonomy

Class

Realm

Kingdom

Images

Electron Micrograph
Image

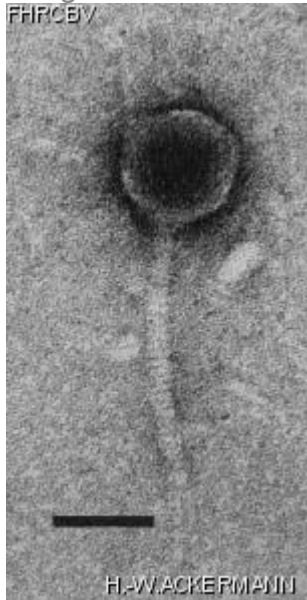


Image description
Magnification: 297,000X
Bar: 50 nm
Staining: UA

Characteristics
Plaques: 0.1mm, veiled.
Typing phage.
Lesley: YSM double agar layer, 48h.

Genomic sequence
Deactivated

Propagation conditions

Bacterial hosts

[1124](#)

Reference

Can. J. Microbiol. 1982. 28:180-189.

Remarks

History

History

Isolated by

S. M. Lesley and I. Sinha,
CRBI.

Date

07-1979

Received from

S. M. Lesley,
Chemistry and Biology Research Institute,
Research Branch,
Agriculture Canada,
Ottawa, ON. Canada,
K1A 0C6

Date

21-06-1982

Updated at

2024-01-16