

HER number
146

Identification

<i>Name</i> PB-1		<i>Morphotype</i> A1 (Myophage)	
<i>Order</i>	<i>Family</i> ?1		<i>Species</i> <i>Pbunavirus PB1</i>

Other designations
ATCC15692-B3, PB1

Taxonomy

<i>Class</i>	<i>Realm</i>	<i>Kingdom</i>	
--------------	--------------	----------------	--

Images

Electron Micrograph
Image

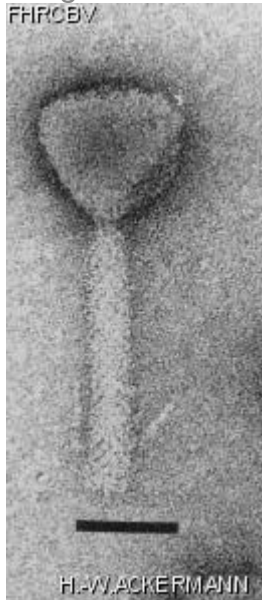


Image description
Magnification: 297,000X
Bar: 50 nm
Staining: UA

<i>Characteristics</i>	<i>Genomic sequence</i> Activated
------------------------	--------------------------------------

Propagation conditions

Bacterial hosts

[1146](#)

Reference

Bradley, D. E. and D. Robertson. 1968. The structure and infective process of a contractile *Pseudomonas aeruginosa* bacteriophage. J. Gen. Virol. 3:247-254.

Remarks

History

History

Received from

American Type Culture Collection,
12301 Parklawn Drive,
Rockville, Maryland, 20852,
USA.

Date

15-10-1982

Isolated by

D. E. Bradley

Date

1968

Updated at

2024-01-16