

HER number
165

Identification

<i>Name</i> 165	<i>Morphotype</i> A1 (Myophage)	<i>Other designations</i>
--------------------	------------------------------------	---------------------------

Taxonomy

<i>Realm</i> <i>Duplodnaviria</i>	<i>Kingdom</i> <i>Heunggongvirae</i>	<i>Phylum</i> <i>Uroviricota</i>	<i>Class</i> <i>Caudoviricetes</i>
<i>Order</i>	<i>Family</i>	<i>Genus</i>	<i>Species</i>

Images

Electron Micrograph

Image
FHRCEV

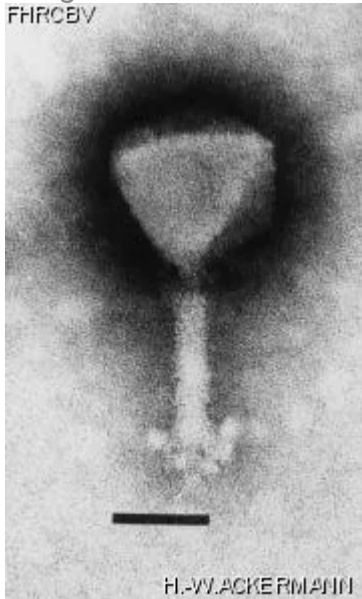


Image description

Magnification: 297,000X

Bar: 50 nm

Staining: PTB

<p><i>Characteristics</i></p> <p>Plaques : 0.2-0.3 mm, clear. Collar fibers. Plaques easier to see after 3 days.</p>	<p><i>Genomic sequence</i></p> <p>Deactivated</p>				
<p>Propagation conditions</p>					
<p><i>Bacterial hosts</i></p> <p>1165</p>					
<p><i>Reference</i></p> <p>Koga, T., S. Toyoshima, and T. Kawata. 1982. Morphological varieties and host ranges of *Vibrio parahaemolyticus* bacteriophages isolated from seawater. Appl. Environ. Microbiol. 44:466-470.</p>					
<p><i>Remarks</i></p>					
<p>History</p>					
<p><i>History</i></p> <table> <tr> <td> <p>Received from</p> <p>Dr Tomio Kawata, Department of Food Microbiology, Tokushima University School of Medecine, Tokushima, 770, Japan.</p> </td><td> <p>Date</p> <p>02-21-1983</p> </td></tr> <tr> <td> <p>Isolated by</p> <p>T. Koga and T. Kawata Tokushima, Japan</p> </td><td> <p>Date</p> <p>08-1977</p> </td></tr> </table>		<p>Received from</p> <p>Dr Tomio Kawata, Department of Food Microbiology, Tokushima University School of Medecine, Tokushima, 770, Japan.</p>	<p>Date</p> <p>02-21-1983</p>	<p>Isolated by</p> <p>T. Koga and T. Kawata Tokushima, Japan</p>	<p>Date</p> <p>08-1977</p>
<p>Received from</p> <p>Dr Tomio Kawata, Department of Food Microbiology, Tokushima University School of Medecine, Tokushima, 770, Japan.</p>	<p>Date</p> <p>02-21-1983</p>				
<p>Isolated by</p> <p>T. Koga and T. Kawata Tokushima, Japan</p>	<p>Date</p> <p>08-1977</p>				
<p><i>Source</i></p> <p>sea water</p>					
<p><i>Updated at</i></p> <p>2024-01-16</p>					