

HER number
172

Identification

<i>Name</i> 172	<i>Morphotype</i> C3 (Podophage)	<i>Other designations</i>
--------------------	-------------------------------------	---------------------------

Taxonomy

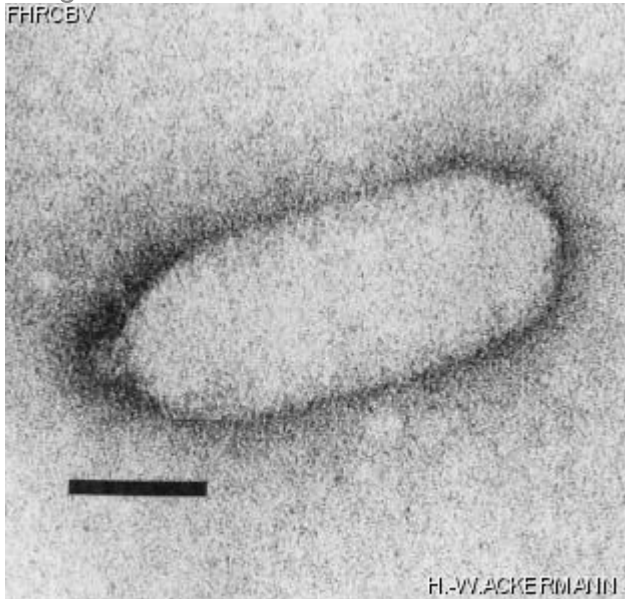
<i>Realm</i> <i>Duplodnaviria</i>	<i>Kingdom</i> <i>Heunggongvirae</i>	<i>Phylum</i> <i>Uroviricota</i>	<i>Class</i> <i>Caudoviricetes</i>
<i>Order</i>	<i>Family</i>	<i>Genus</i>	<i>Species</i>

Images

Electron Micrograph

Image

FHRCBV



HI-WACKERMANIN

Image description

Magnification: 297,000X

Bar: 50 nm

Staining: UA

<p><i>Characteristics</i></p> <p>Plaques: 0.1 mm, clear. Virulent. No DNA homology with 1/M61-25, C2, 7-11, 13/a, Esc-7-11 G+C=37%</p>	<p><i>Genomic sequence</i></p> <p>Deactivated</p>				
<p>Propagation conditions</p>					
<p><i>Bacterial hosts</i></p> <p>1172</p>					
<p><i>Reference</i></p> <p>Kozloff, L.M., V. Chapman, and S. Delong. 1981. Defective packaging of unusual DNA in a virulent *Erwinia* phage, Erh1. Progr. Clin. Biol. Res. 64:253-269.</p>					
<p><i>Remarks</i></p> <p>Held in the ATCC collection Destroys the ice nucleating activity of its host before lysis Many phage particles appear defective and infectious centers can be formed by complementation and multiple infection.</p>					
<p>History</p>					
<p><i>History</i></p> <table> <tr> <td> <p>Received from</p> <p>Lloyd M. Kozloff, Dean, Graduate division, University of California, S-140, San Fransisco, CA 94143, USA</p> </td><td> <p>Date</p> <p>03-11-1983</p> </td></tr> <tr> <td> <p>Isolated by</p> <p>L.M. Kozloff, Denver, CO, USA</p> </td><td> <p>Date</p> </td></tr> </table>		<p>Received from</p> <p>Lloyd M. Kozloff, Dean, Graduate division, University of California, S-140, San Fransisco, CA 94143, USA</p>	<p>Date</p> <p>03-11-1983</p>	<p>Isolated by</p> <p>L.M. Kozloff, Denver, CO, USA</p>	<p>Date</p>
<p>Received from</p> <p>Lloyd M. Kozloff, Dean, Graduate division, University of California, S-140, San Fransisco, CA 94143, USA</p>	<p>Date</p> <p>03-11-1983</p>				
<p>Isolated by</p> <p>L.M. Kozloff, Denver, CO, USA</p>	<p>Date</p>				
<p><i>Source</i></p> <p>Grass clippings</p>					
<p><i>Updated at</i></p> <p>2024-01-16</p>					