

HER number
205

Identification

<i>Name</i> 205	<i>Morphotype</i> B1 (Siphophage)	<i>Other designations</i>
--------------------	--------------------------------------	---------------------------

Taxonomy

<i>Realm</i> <i>Duplodnaviria</i>	<i>Kingdom</i> <i>Heunggongvirae</i>	<i>Phylum</i> <i>Uroviricota</i>	<i>Class</i> <i>Caudoviricetes</i>
<i>Order</i>	<i>Family</i>	<i>Genus</i> <i>Whiteheadvirus</i>	<i>Species</i> <i>Whiteheadvirus</i> wv1358

Images

Electron Micrograph

Image
FHRCEV

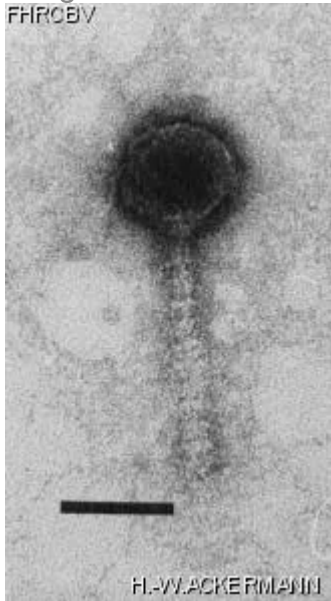


Image description

Magnification: 297,000X

Bar: 50 nm

Staining: UA

<i>Characteristics</i> Plaques: 2-3 mm, clear. Transverse discs on tail. Used for DNA-DNA homology testing.	<i>Genomic sequence</i> Activated				
Propagation conditions					
<i>Bacterial hosts</i> 1205					
<i>Reference</i> Jarvis, A.W. 1984. Differentiation of lactic streptococcal phages into phage species by DNA-DNA homology. Appl. Environ. Microbiol. 47:343-349.					
<i>Remarks</i> Also held in the New Zealand Dairy Research Institute Collection.					
History					
<i>History</i> <table><tr><td>Received from Dr. A.W. Jarvis New Zealand Dairy Research Institute Private Bag, Palmerston North, New Zealand</td><td>Date 19-01-1984</td></tr><tr><td>Isolated by H. A. Heap, New Zealand Dairy Research Institute, Private Bag, Palmerston North, New Zealand.</td><td>Date 08-1981</td></tr></table>		Received from Dr. A.W. Jarvis New Zealand Dairy Research Institute Private Bag, Palmerston North, New Zealand	Date 19-01-1984	Isolated by H. A. Heap, New Zealand Dairy Research Institute, Private Bag, Palmerston North, New Zealand.	Date 08-1981
Received from Dr. A.W. Jarvis New Zealand Dairy Research Institute Private Bag, Palmerston North, New Zealand	Date 19-01-1984				
Isolated by H. A. Heap, New Zealand Dairy Research Institute, Private Bag, Palmerston North, New Zealand.	Date 08-1981				
<i>Source</i> Cheese whey					
<i>Updated at</i> 2024-01-16					