

*HER number*  
210

## Identification

<i>Name</i> 210	<i>Morphotype</i> A1 (Myophage)	<i>Other designations</i>
--------------------	------------------------------------	---------------------------

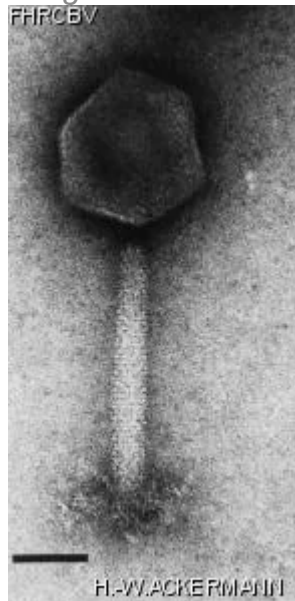
## Taxonomy

<i>Realm</i>	<i>Kingdom</i>	<i>Phylum</i>	<i>Class</i>
<i>Order</i>	<i>Family</i> ?1	<i>Genus</i>	<i>Species</i>

## Images

*Electron Micrograph*

*Image*



*Image description*

Magnification: 297,000X

Bar: 50 nm

Staining: UA

<i>Characteristics</i> Plaques: 0.5 mm, veiled. Very large phage. Resembles Klebsiella phage K1 9.	<i>Genomic sequence</i> Deactivated
<b>Propagation conditions</b>	
<i>Bacterial hosts</i> 1210	
<i>Reference</i> Chow, M.S., and M.A. Rouf. 1983. Isolation and partial characterization of two *Aeromonas hydrophila* bacteriophages. Appl. Environ. Microbiol. 45:1670-1676.	
<i>Remarks</i>	
<b>History</b>	
<i>History</i>	
<b>Isolated by</b> M.S. Chow and M.A. Rouf Oshkosh, Wisconsin	<b>Date</b> 05-1979
<b>Received from</b> Dr. M.A. Rouf Department of Biology and Microbiology, University of Wisconsin, Oshkosh, Wisconsin 54901, USA	<b>Date</b> 26-05-1984
<i>Source</i> Final sewage effluent, Oshkosh waste water plant	
<i>Updated at</i> 2024-01-16	