

HER number
218

Identification

<i>Name</i> M	<i>Morphotype</i> E1	<i>Other designations</i>	
------------------	-------------------------	---------------------------	--

Taxonomy

<i>Realm</i> Riboviria	<i>Kingdom</i> Orthornavirae	<i>Phylum</i> Lenarviricota	<i>Class</i> Leviviricetes
<i>Order</i> Norzivirales	<i>Family</i> Fiersviridae	<i>Genus</i> Empivirus	<i>Species</i> Empivirus allolyticum

Images

Electron Micrograph

Image

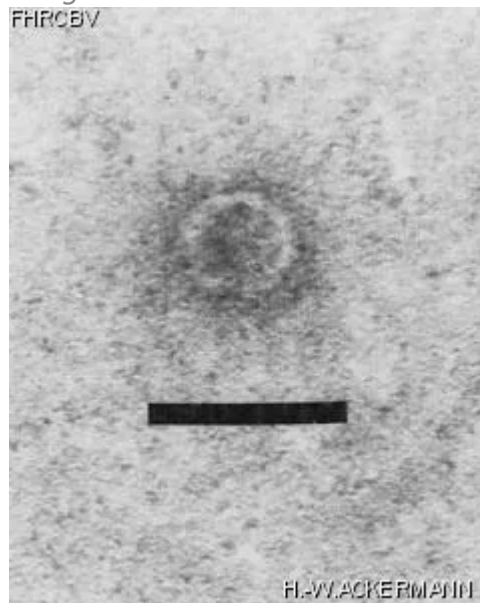


Image description

Magnification: 297,000X

Bar: 50 nm

Staining: UAB

Characteristics

Plaques: 0.1 mm, clear.
RNA-containing phage.
Adsorbs to sides of IncM plasmide-coded pili.

Genomic sequence

Activated

Propagation conditions

Bacterial hosts

1218

Reference

Coetzee, J.N., D.E. Bradley, R.W. Hedges, J. Fleming, and G. Lecatsas. 1983. Bacteriophage M: an incompatibility group M plasmid-specific phage. J. Gen Microbiol. 129:2271-2276.

Remarks

History

History

Received from

J. Schell-M. van Montagu,
Laboratorium voor Genetika,
Ledeganckstraat 35,
B-9000 Gent,
Belgium.

Date

02-15-1984

Received from

J.N. Coetzee,
Institute for Pathology,
P.O. Box 2034,
Pretoria 0001,
South Africa.

Date

Isolated by

J.N. Coetzee,
Institute for Pathology,
P.O. Box 2034,
Pretoria 0001,
South Africa.

Date

1982

Source

Sewage

Updated at

2024-01-17