

*HER number*  
219

## Identification

|                    |                                     |                           |
|--------------------|-------------------------------------|---------------------------|
| <i>Name</i><br>219 | <i>Morphotype</i><br>C1 (Podophage) | <i>Other designations</i> |
|--------------------|-------------------------------------|---------------------------|

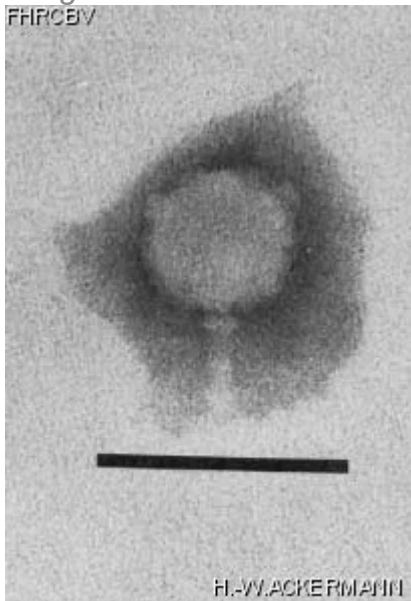
## Taxonomy

|              |                     |               |                |
|--------------|---------------------|---------------|----------------|
| <i>Realm</i> | <i>Kingdom</i>      | <i>Phylum</i> | <i>Class</i>   |
| <i>Order</i> | <i>Family</i><br>?1 | <i>Genus</i>  | <i>Species</i> |

## Images

*Electron Micrograph*

*Image*  
FHR05V



*Image description*

Magnification: 594,000X

Bar: 50 nm

Staining: PT

H. WACKERMANN

|   |   |
|---|---|
| <p><i>Characteristics</i></p> <p>Plaques: 0.1 mm, veiled.</p> <p>Mini T3-like phage adsorbing to IncJ plasmid coded pili and some IncC and IncD pili.</p> <p>Apparently the smallest podovirus in existence.</p> <p>Forms extremely faint plaques which are best seen on plates that have stood at room temperature after overnight incubation.</p> | <p><i>Genomic sequence</i></p> <p>Deactivated</p> |
| <p><b>Propagation conditions</b></p>  |   |
| <p><i>Bacterial hosts</i></p> <p>1219</p>   |   |
| <p><i>Reference</i></p> <p>Bradley, D.E., F.A. Sirgel, J.N. Coetzee, and R.W. Hedges. 1982. Phage C-2 and J: IncC and IncJ plasmid-dependant phages. J. Gen. Microbiol. 128:2485-2498.</p>  |   |
| <p><i>Remarks</i></p>   |   |
| <p><b>History</b></p>   |   |

*History*

**Received from**

J.N. Coetzee,  
Institute for Pathology,  
P.O. Box 2034,  
Pretoria 0001,  
South Africa.

**Date**

**Received from**

J. Schell-M. van Montagu,  
Laboratorium voor Genetika,  
Ledeganckstraat 35,  
B-9000 Gent,  
Belgium.

**Date**

02-11-1984

**Isolated by**

J.N. Coetzee,  
Institute for Pathology,  
P.O. Box 2034,  
Pretoria 0001,  
South Africa.

**Date**

1981

*Source*

Sewage

*Updated at*

2024-01-17