

HER number
248

Identification

<i>Name</i> 248	<i>Morphotype</i> C3 (Podophage)	<i>Other designations</i>
--------------------	-------------------------------------	---------------------------

Taxonomy

<i>Realm</i> <i>Duplodnaviria</i>	<i>Kingdom</i> <i>Heunggongvirae</i>	<i>Phylum</i> <i>Uroviricota</i>	<i>Class</i> <i>Caudoviricetes</i>
<i>Order</i>	<i>Family</i>	<i>Genus</i> <i>Chopinvirus</i>	<i>Species</i> <i>Chopinvirus KSY1</i>

Images

Electron Micrograph

Image

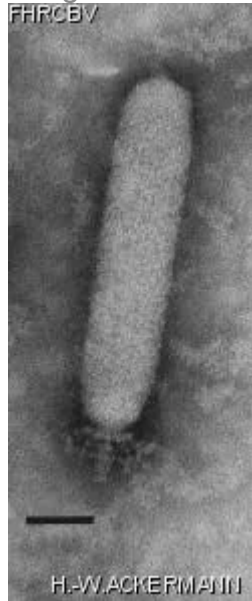


Image description

Magnification: 297,000X

Bar: 50 nm

Staining: PT

Characteristics

Plaques of 1 mm with halo after two days.

Genomic sequence

Activated

Propagation conditions

Bacterial hosts

1248

Reference

Kalso, S., E.-L. Nurmiäho-Lassila, M.-L. Saxelin, and V. Sundman. 1986. Some characteristics of the lactic streptococcal phage KSY1. *Milchwissenschaft* 41:65-68.

Remarks

Held in another permanent collection :
Department of General Microbiology
University of Helsinki
Mannerheimintie 172, SF-00280 Helsinki 28
Finland

History

History

Received from

Dr Maija-Liisa Saxelin
Product Development Division
Research and Development Department
VALIO Finnish Cooperative Dairies Association
P.O. Box 390, SF-00101 Helsinki, Finland

Date

01-08-1986

Isolated by

Dr Maija-Liisa Saxelin
Department of General Microbiology
University of Helsinki
Finland

Date

1977

Source

Finnish cultured milk product "viiili"

Updated at

2024-01-17