

*HER number*  
300

## Identification

<i>Name</i> 300	<i>Morphotype</i> A1 (Myophage)	<i>Other designations</i>
--------------------	------------------------------------	---------------------------

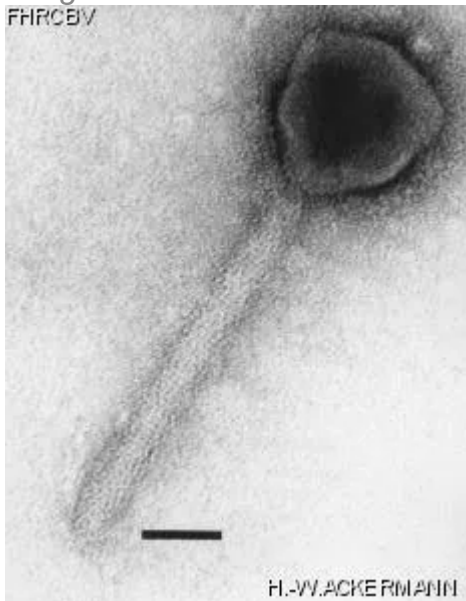
## Taxonomy

<i>Realm</i>	<i>Kingdom</i>	<i>Phylum</i>	<i>Class</i>
<i>Order</i>	<i>Family</i> ?1	<i>Genus</i>	<i>Species</i>

## Images

*Electron Micrograph*

*Image*  
FHRCEV



*Image description*

Magnification: 297,000X

Bar: 50 nm

Staining: UA

<i>Characteristics</i> Clear plaques of 0.3mm Very large head New species	<i>Genomic sequence</i> Deactivated				
<b>Propagation conditions</b>					
<i>Bacterial hosts</i> 1300					
<i>Reference</i> Stevenson, R.M.W., and D.W. Airdrie. 1984. Isolation of *Yersinia ruckeri* bacteriophages. Appl. Environ. Microbiol. 47: 1201-1205.					
<i>Remarks</i>					
<b>History</b>					
<i>History</i> <table><tr><td><b>Received from</b> Kelly McAllister (for R.M.W. Stevenson) Department of Microbiology University of Guelph, Room 322 Guelph, Ontario, N1G 2W1</td><td><b>Date</b> 21-01-1993</td></tr><tr><td><b>Isolated by</b> R.M.W. Stevenson and D.W. Airdrie Department of Microbiology, University of Guelph</td><td><b>Date</b> Before 1984</td></tr></table>		<b>Received from</b> Kelly McAllister (for R.M.W. Stevenson) Department of Microbiology University of Guelph, Room 322 Guelph, Ontario, N1G 2W1	<b>Date</b> 21-01-1993	<b>Isolated by</b> R.M.W. Stevenson and D.W. Airdrie Department of Microbiology, University of Guelph	<b>Date</b> Before 1984
<b>Received from</b> Kelly McAllister (for R.M.W. Stevenson) Department of Microbiology University of Guelph, Room 322 Guelph, Ontario, N1G 2W1	<b>Date</b> 21-01-1993				
<b>Isolated by</b> R.M.W. Stevenson and D.W. Airdrie Department of Microbiology, University of Guelph	<b>Date</b> Before 1984				
<i>Source</i> Sewage, Water Pollution Control Plant, Guelph, Ontario					
<i>Updated at</i> 2024-01-19					