

*HER number*  
325

### Identification

<i>Name</i> 325	<i>Morphotype</i> A1 (Myophage)	<i>Other designations</i>	
--------------------	------------------------------------	---------------------------	--

### Taxonomy

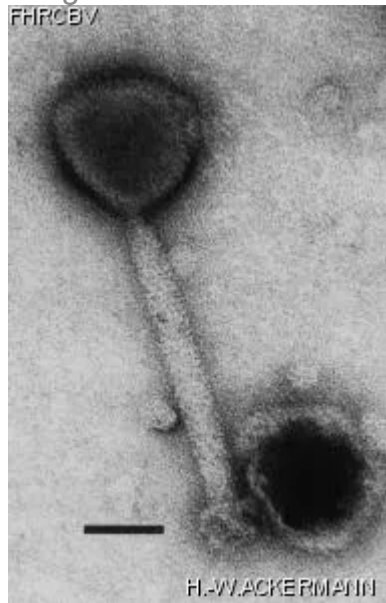
<i>Realm</i>	<i>Kingdom</i>	<i>Phylum</i>	<i>Class</i>
<i>Order</i>	<i>Family</i> ?1	<i>Genus</i>	<i>Species</i>

### Images

*Electron Micrograph*

*Image*

FHRC/EBV



*Image description*

Magnification: 297,000X

Bar: 50 nm

Staining: UA

*Characteristics*  
1 mm, clear

*Genomic sequence*  
Deactivated

## Propagation conditions

### *Bacterial hosts*

1325

### *Reference*

Trevors, K.E., R.A. Holley and A.G. Kempton. 1983. Isolation and characterization of a \*Lactobacillus plantarum\* bacteriophage isolated from a meat starter culture. Journal of Applied Bacteriology 54:281-288.

### *Remarks*

Morphologically identical with phages species TP50 of \*Bacillus\*, Twort of \*Staphylococcus\*, and RSh of \*Streptococcus\*.

Conspicuous capsomers.

THIS PHAGE IS NOT AVAILABLE FOR THIS MOMENT

## History

### *History*

#### **Received from**

Rick A. Holley  
Food Research Institute  
Agriculture Canada  
Ottawa, Ontario, Canada, K1A 0C6

#### **Date**

#### **Isolated by**

Rick A. Holley  
Food Research Institute  
Agriculture Canada  
Ottawa, Ontario, Canada, K1A 0C6

#### **Date**

09-1979

#### **Received from**

Karen Trevors  
Dept of Biology, Faculty of Science  
University of Waterloo  
Waterloo, Ontario, Canada, N2L 3G1

#### **Date**

25-05-1988

### *Source*

Lyophilized meat starter culture (FERMENTANG BN-1005) B. Heller & Co. Bedford Park, IL 60638, USA

### *Updated at*

2024-01-19