

HER number
339

Identification

<i>Name</i> 339	<i>Morphotype</i> A1 (Myophage)	<i>Other designations</i> 1/V12
--------------------	------------------------------------	------------------------------------

Taxonomy

<i>Realm</i>	<i>Kingdom</i>	<i>Phylum</i>	<i>Class</i>
<i>Order</i>	<i>Family</i> ?1	<i>Genus</i>	<i>Species</i>

Images

Electron Micrograph

Image

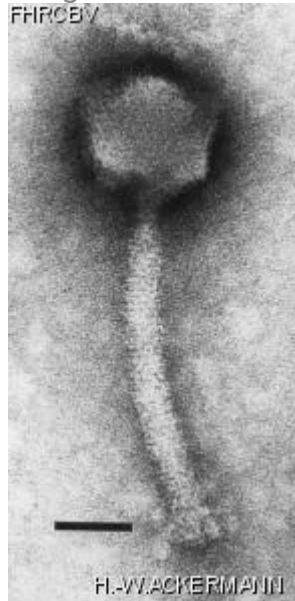


Image description

Magnification: 297,000X

Bar: 50 nm

Staining: UA

<p><i>Characteristics</i> Clear plaques 0.1 mm. Conspicuous capsomers. Morphologically identical with the following phage species: Twort(*Staphylococcus*), SP50 (*Bacillus*), fri (*Lactobacillus*). Morphologically related to species A19 of *Brochothrix*. Replaces phage RZh which is no longer available (A.S. Tikhonenko).</p>	<p><i>Genomic sequence</i> Deactivated</p>
--	---

Propagation conditions

Bacterial hosts
1339

Reference
Jarvis, A.W., L.J. Collins, H.W. Ackermann. 1993. A study of five bacteriophages of the Myoviridae family which replicate on different gram-positive bacteria. Arch. Virol. 133: 75-84.

Remarks
Also held at the DSMZ collection under DSM 112154.

History

<i>History</i>	
<p>Isolated by Dr S.S. Kasatiya Public Health Laboratory Ottawa, Ontario, Canada</p>	<p>Date 1975</p>
<p>Received from Olive Chen Public Health Laboratory P.O. Box 6301, Station J Ottawa, Ontario, Canada K2A 1S8</p>	<p>Date 29-06-1988</p>

Source
Sewage, Ste-Rose, P.Q., Canada

Updated at
2024-01-19