

HER number
344

Identification

<i>Name</i> 344	<i>Morphotype</i> B1 (Siphophage)	<i>Other designations</i>
--------------------	--------------------------------------	---------------------------

Taxonomy

<i>Realm</i>	<i>Kingdom</i>	<i>Phylum</i>	<i>Class</i>
<i>Order</i>	<i>Family</i> ?1	<i>Genus</i>	<i>Species</i>

Images

Electron Micrograph

Image

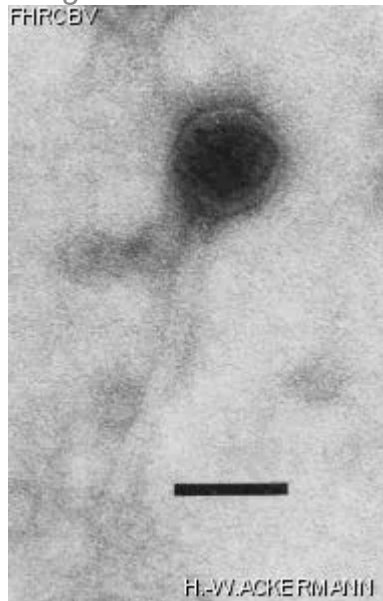


Image description

Magnification: 297,000X

Bar: 50 nm

Staining: UA

<i>Characteristics</i> Small phage of uncharacteristic morphology. Individualized by absence of DNA-DNA hybridization.	<i>Genomic sequence</i> Deactivated
Propagation conditions	
<i>Bacterial hosts</i> 1344	
<i>Reference</i> Jarvis, A.W. and coll. 1991. Species and type phages of lactococcal bacteriophages. Intervirology. 32: 2-9.	
<i>Remarks</i>	
History	
<i>History</i>	
Isolated by New Zealand Dairy Research Institute Palmerston, New Zealand	Date 1985
Received from Dr A.W. Jarvis New Zealand Dairy Research Institute Microbial Genetics Section Private Bag, Palmerston North New Zealand	Date 23-10-1989
<i>Source</i> Cheese whey	
<i>Updated at</i> 2024-01-19	