

HER number
383

Identification

| | | |
|--------------------|--------------------------------------|---------------------------|
| <i>Name</i> 383 | <i>Morphotype</i> B2 (Siphophage) | <i>Other designations</i> |
|--------------------|--------------------------------------|---------------------------|

Taxonomy

| | | | |
|--------------|---------------------|------------------------------------|--|
| <i>Realm</i> | <i>Kingdom</i> | <i>Phylum</i> | <i>Class</i> |
| <i>Order</i> | <i>Family</i> ?1 | <i>Genus</i> <i>Fromanvirus</i> | <i>Species</i> <i>Fromanvirus D29</i> |

Images

Electron Micrograph

Image

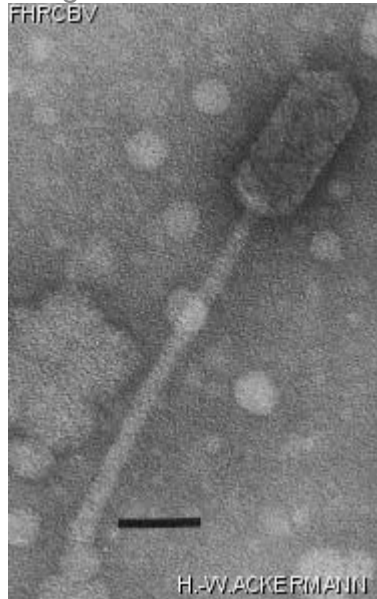


Image description

Magnification: 297,000X

Bar: 50 nm

Staining: UA

Characteristics
Clear plaques of 1 mm.

Genomic sequence
Activated

Propagation conditions

Bacterial hosts

1316

Reference

Froman, S., W. Drake, E. Bogen. 1954. Bacteriophage active against virulent *Mycobacterium tuberculosis*. I. Isolation and activity. Amer. J. Publ. Health. 44: 1326-1333.

Remarks

Long head.
Chloroform-sensitive.
Said to contain lipids (not confirmed).

History

History

Received from

Dr Edith Mankiewicz
Lakeshore General Hospital
160 Stillview
Pointe-Claire, QC, Canada
H9R 2Y2

Date

06-06-1988

Source

Soil

Updated at

2024-01-22