

HER number
420

Identification

<i>Name</i> 420	<i>Morphotype</i> E2	<i>Other designations</i>
--------------------	-------------------------	---------------------------

Taxonomy

<i>Realm</i>	<i>Kingdom</i>	<i>Phylum</i>	<i>Class</i>
<i>Order</i>	<i>Family</i> Cystoviridae	<i>Genus</i> Cystovirus	<i>Species</i> Cystovirus phi13

Images

Electron Micrograph

Image

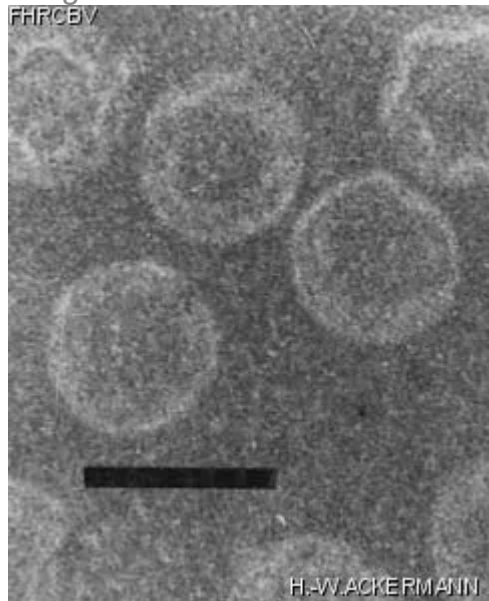


Image description

Magnification: 297,000X

Bar: 50 nm

Staining: PT

Characteristics
Plaques: 1.5 mm, clear.

Genomic sequence
Activated

Propagation conditions

Bacterial hosts

1419

Reference

Mindich, L. and coll. 1999. Isolation of additional bacteriophages with genomes of segmented double-stranded RNA. J. Bacteriol. 181: 4505-4508.

Remarks

Lipid envelope.
Double-stranded DNA.
Kills host without multiplication at high multiplicity.
Inactivated by chloroform or detergents.

History

History

Isolated by

Xueying Quiao
Mindich's Laboratory
New York

Date

1998

Received from

Dr L. Mindich
Dept. of Microbiology
Public Health Research Institute
455 First Avenue, New York, NY 10016

Date

26-08-2000

Source

Raphanus sativum (radish) leaves.

Updated at

2024-01-22