

HER number
422

Identification

Name 422	Morphotype A2 (Myophage)	Other designations
-------------	-----------------------------	--------------------

Taxonomy

Realm	Kingdom	Phylum	Class
Order	Family Straboviridae	Genus	Species

Images

Electron Micrograph

Image

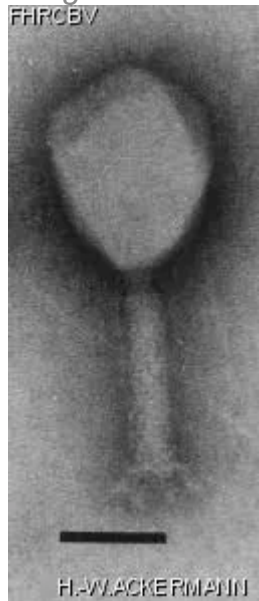


Image description

Magnification: 297,000X

Bar: 50 nm

Staining: UA

Characteristics

Genomic sequence
Activated

Propagation conditions

Bacterial hosts

1422

Reference

Tétard, F. and coll. 2001. Phylogeny of the major head and tail genes of the wide-ranging T4-like bacteriophages. J. Bacteriol. 183: 358-366.

Remarks

History

History

Source

Updated at
2024-01-22