

Numéro HER
121

Identification

Nom A3 Lesley	Morphotype C1 (Podophage)	Autres désignations	
------------------	------------------------------	---------------------	--

Taxonomie

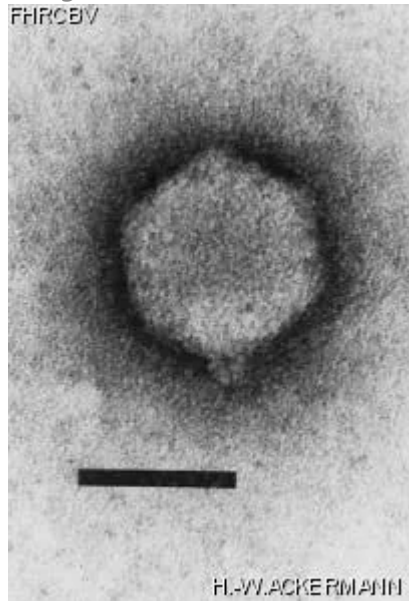
Domaine <i>Duplodnaviria</i>	Règne <i>Heunggongvirae</i>	Embranchement <i>Uroviricota</i>	Classe <i>Caudoviricetes</i>
Ordre	Famille	Genre	Espèce

Images

Photo en microscopie électronique

Image

FHRCEV



Description de l'image

Magnification: 297,000X

Bar: 50 nm

Staining: UAB

<p><i>Caractéristique</i></p> <p>Plaques: <0.1mm, veiled. Typing phage. Lesley: YSM double agar layer, 48h.</p>	<p><i>Séquence génomique</i></p> <p>Désactivé</p>						
<p>Conditions de propagation</p>							
<p><i>Hôtes bactériens</i></p> <p>1121</p>							
<p><i>Référence</i></p> <p>Can. J. Microbiol. 1982. 28:180-189.</p>							
<p><i>Remarque</i></p>							
<p>Historique</p>							
<p><i>Historique</i></p> <table border="0" data-bbox="105 1045 1516 1575"> <thead> <tr> <th data-bbox="105 1045 1079 1081">Received from</th> <th data-bbox="1101 1045 1516 1081">Date</th> </tr> </thead> <tbody> <tr> <td data-bbox="105 1094 1079 1360"> S. M. Lesley, Chemistry and Biology Research Institute, Research Branch, Agriculture Canada, Ottawa, ONT. Canada, K1A 0C6 </td> <td data-bbox="1101 1094 1516 1129"> 06-21-1982 </td> </tr> <tr> <td data-bbox="105 1444 1079 1575"> Isolated by S. M. Lesley and I. Sinha, CRBI. </td> <td data-bbox="1101 1444 1516 1522"> Date 06-1979 </td> </tr> </tbody> </table>		Received from	Date	S. M. Lesley, Chemistry and Biology Research Institute, Research Branch, Agriculture Canada, Ottawa, ONT. Canada, K1A 0C6	06-21-1982	Isolated by S. M. Lesley and I. Sinha, CRBI.	Date 06-1979
Received from	Date						
S. M. Lesley, Chemistry and Biology Research Institute, Research Branch, Agriculture Canada, Ottawa, ONT. Canada, K1A 0C6	06-21-1982						
Isolated by S. M. Lesley and I. Sinha, CRBI.	Date 06-1979						
<p><i>Source</i></p> <p>Local soil, Ottawa, Ontario, Canada.</p>							
<p><i>Dernière mise à jour</i></p> <p>2024-01-16</p>							