

Numéro HER  
125

## Identification

Nom M5 Lesley	Morphotype C1 (Podophage)	Autres désignations M5	
------------------	------------------------------	---------------------------	--

## Taxonomie

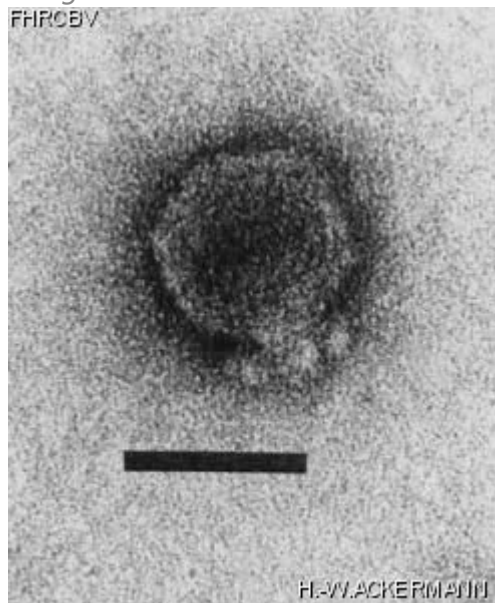
Domaine <i>Duplodnaviria</i>	Règne <i>Heunggongvirae</i>	Embranchement <a href="#">Uroviricota</a>	Classe <i>Caudoviricetes</i>
Ordre	Famille	Genre	Espèce

## Images

Photo en microscopie électronique

Image

FHRC/CEV



Description de l'image

Magnification: 297,000X

Bar: 50 nm

Staining: UAB

<p><i>Caractéristique</i></p> <p>Plaques: 0.5- 1mm, veiled. Lesley: YSM double agar layer, 48h.</p>	<p><i>Séquence génomique</i></p> <p>Désactivé</p>								
<p><b>Conditions de propagation</b></p>									
<p><i>Hôtes bactériens</i></p> <p>1125</p>									
<p><i>Référence</i></p> <p>Can. J. Microbiol. 1982. 28:180-189.</p>									
<p><i>Remarque</i></p>									
<p><b>Historique</b></p>									
<p><i>Historique</i></p> <table border="0"> <tr> <td data-bbox="107 1003 334 1035"><b>Received from</b></td> <td data-bbox="1101 1003 1175 1035"><b>Date</b></td> </tr> <tr> <td data-bbox="107 1052 734 1310">S. M. Lesley, Chemistry and Biology Research Institute, Research Branch, Agriculture Canada, Ottawa, ON. Canada, K1A 0C6</td> <td data-bbox="1101 1052 1273 1083">06-21-1982</td> </tr> <tr> <td data-bbox="107 1402 282 1434"><b>Isolated by</b></td> <td data-bbox="1101 1402 1175 1434"><b>Date</b></td> </tr> <tr> <td data-bbox="107 1451 477 1524">S. M. Lesley and I. Sinha, CRBI.</td> <td data-bbox="1101 1451 1224 1482">07-1979</td> </tr> </table>		<b>Received from</b>	<b>Date</b>	S. M. Lesley, Chemistry and Biology Research Institute, Research Branch, Agriculture Canada, Ottawa, ON. Canada, K1A 0C6	06-21-1982	<b>Isolated by</b>	<b>Date</b>	S. M. Lesley and I. Sinha, CRBI.	07-1979
<b>Received from</b>	<b>Date</b>								
S. M. Lesley, Chemistry and Biology Research Institute, Research Branch, Agriculture Canada, Ottawa, ON. Canada, K1A 0C6	06-21-1982								
<b>Isolated by</b>	<b>Date</b>								
S. M. Lesley and I. Sinha, CRBI.	07-1979								
<p><i>Source</i></p> <p>Local soil, Ottawa, Ontario, Canada.</p>									
<p><i>Dernière mise à jour</i></p> <p>2024-01-16</p>									