

Numéro HER
126

Identification

Nom 70 Lesley	Morphotype C1 (Podophage)	Autres désignations 70	
------------------	------------------------------	---------------------------	--

Taxonomie

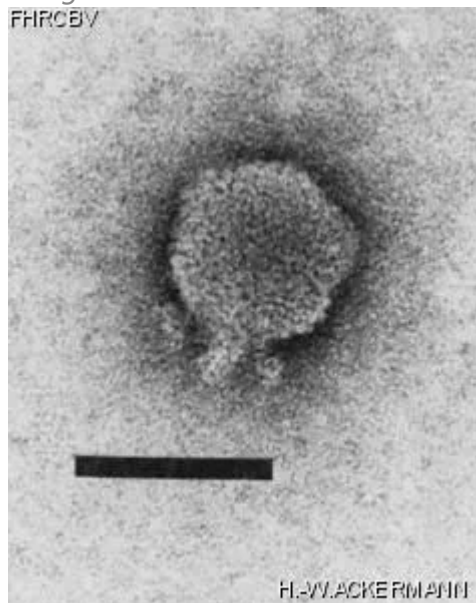
Domaine <i>Duplodnaviria</i>	Règne <i>Heunggongvirae</i>	Embranchement Uroviricota	Classe <i>Caudoviricetes</i>
Ordre	Famille	Genre	Espèce

Images

Photo en microscopie électronique

Image

FHRCBY



Description de l'image

Magnification: 297,000X

Bar: 50 nm

Staining: UAB

<p><i>Caractéristique</i></p> <p>Plaques: 0.1- 0.5mm, clear. Typing phage. Lesley: YSM double agar layer, 48h.</p>	<p><i>Séquence génomique</i></p> <p>Désactivé</p>								
<p>Conditions de propagation</p>									
<p><i>Hôtes bactériens</i></p> <p>1126</p>									
<p><i>Référence</i></p>									
<p><i>Remarque</i></p>									
<p>Historique</p>									
<p><i>Historique</i></p> <table border="0"> <tr> <td data-bbox="107 1100 334 1129">Received from</td> <td data-bbox="1101 1100 1175 1129">Date</td> </tr> <tr> <td data-bbox="107 1146 734 1407"> S. M. Lesley, Chemistry and Biology Research Institute, Research Branch, Agriculture Canada, Ottawa, ON. Canada, K1A 0C6 </td> <td data-bbox="1101 1146 1273 1176">06-21-1982</td> </tr> <tr> <td data-bbox="107 1499 282 1528">Isolated by</td> <td data-bbox="1101 1499 1175 1528">Date</td> </tr> <tr> <td data-bbox="107 1545 477 1617"> S. M. Lesley and I. Sinha, CRBI. </td> <td data-bbox="1101 1545 1224 1575">11-1979</td> </tr> </table>		Received from	Date	S. M. Lesley, Chemistry and Biology Research Institute, Research Branch, Agriculture Canada, Ottawa, ON. Canada, K1A 0C6	06-21-1982	Isolated by	Date	S. M. Lesley and I. Sinha, CRBI.	11-1979
Received from	Date								
S. M. Lesley, Chemistry and Biology Research Institute, Research Branch, Agriculture Canada, Ottawa, ON. Canada, K1A 0C6	06-21-1982								
Isolated by	Date								
S. M. Lesley and I. Sinha, CRBI.	11-1979								
<p><i>Source</i></p> <p>Local soil, Ottawa, Ontario, Canada.</p>									
<p><i>Dernière mise à jour</i></p> <p>2024-01-16</p>									