

Numéro HER
172

Identification

Nom Erh1	Morphotype C3 (Podophage)	Autres désignations	
-------------	------------------------------	---------------------	--

Taxonomie

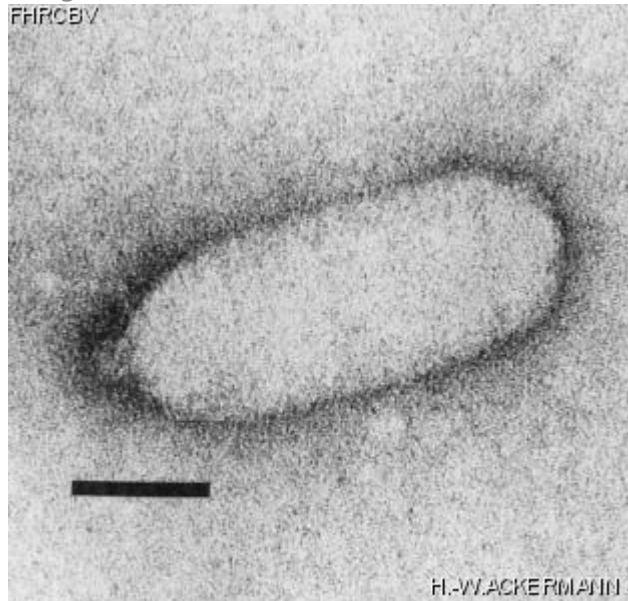
Domaine <i>Duplodnaviria</i>	Règne <i>Heunggongvirae</i>	Embranchement Uroviricota	Classe <i>Caudoviricetes</i>
Ordre	Famille	Genre	Espèce

Images

Photo en microscopie électronique

Image

FHRCBV



H.-WACKERMANIN

Description de l'image

Magnification: 297,000X

Bar: 50 nm

Staining: UA

Caractéristique

Plaques: 0.1 mm, clear.
Virulent.
No DNA homology with 1/M61-25, C2, 7-11,
13/a, Esc-7-11
G+C=37%

Séquence génomique

Désactivé

Conditions de propagation

Hôtes bactériens

1172

Référence

Kozloff, L.M., V. Chapman, and S. Delong. 1981. Defective packaging of unusual DNA in a virulent *Erwinia* phage, Erh1. Progr. Clin. Biol. Res. 64:253-269.

Remarque

Held in the ATCC collection
Destroys the ice nucleating activity of its host before lysis
Many phage particles appear defective and infectious centers can be formed by complementation and multiple infection.

Historique

Historique

Received from

Lloyd M. Kozloff,
Dean, Graduate division,
University of California, S-140,
San Fransisco, CA 94143,
USA

Date

03-11-1983

Isolated by

L.M. Kozloff,
Denver, CO,
USA

Date

Source

Grass clippings

Dernière mise à jour

2024-01-16